



METRANS on the Move: our weekly newsletter written and produced by students



In the News

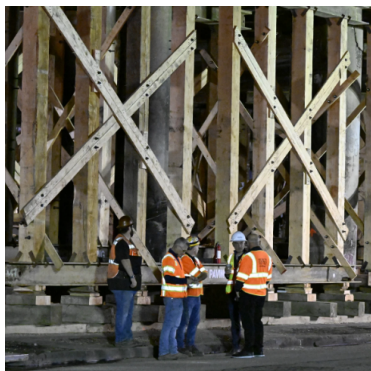
The articles in this newsletter are prepared or accomplished by others in their personal capacity. The opinions expressed are the author's own and do not necessarily reflect the views of METRANS or its partners.



The Interstate, Highway, and Freeway: Vessels of American Motion

As soon as the sun comes up, millions of cars start pounding the nation's roadways, freeways, and interstates, indicating that the heartbeat of America is beginning to quicken. No national transportation network could function without the many kinds of roads, each with its unique design and function. All American drivers, from those who commute every day to those who go cross-country, face these roadways.

Read more [here](#).



The 10 Freeway Is Open. But Is It Safe To Drive?

How many days does it take to open a damaged freeway? Eight, apparently. The 10 Freeway from Alameda Street to the East L.A. interchange reopened Nov. 19, blowing an initial three-to-five week closure timeline out of the water. While the speedy repair has helped Angelenos' commute times, it's also left some folks wondering about safety. Here's what you need to know as you get on the road.

Read the LAist feature [here](#).



Earth Surpasses Critical 2-Degree Warming Threshold, European Climate Officials Say

For the first time since record keeping began, Earth has surpassed a critical temperature threshold that scientists have long warned could unleash the worst effects of climate change. On Friday, the planet soared 2.07 degrees Celsius above preindustrial levels, or the 1850 to 1900 average, according to Europe's Copernicus Climate Change Service.

Read the Los Angeles Times feature [here](#).



LA Metro Tries To Woo Riders With Customer Experience Improvements

Los Angeles Metro released its 2023 customer experience improvement plan last month with a promise to restore rail frequency to pre-COVID service levels. Other action items include improving Spanish language communications and improving lighting and camera visibility across the metro system to bring back more women riders.

Read the SMARTCITIESDIVE feature [here](#).

Webinars & Online Events

Open 3P Supply Chain Workshops - Product manufacturers

Monday, November 27th at 2:00 am PST (online), hosted by Open Data Manchester

These supply chain workshops are designed for members of the packaging value chain looking to enhance their knowledge and understanding of the Open 3P data standard. Workshops focus on different areas of the chain and will help participants recognise the business and environmental advantages of adopting the standard in terms of streamlining processes and optimising resource efficiency. The workshops will focus on the adoption and implementation process and are relevant to the entire chain from organisations involved directly in packaging infrastructure to peripheral entities. The design of the standard will help organisations better report to schemes such as Extended Producer Responsibility (EPR), Plastic Tax, Life Cycle Assessments (LCAs), Deposit Return Schemes (both digital and traditional), as well as pipeline regulations. The Open 3P data standard has been developed by Open Data Manchester on behalf of the packaging industry as part of the PPP initiative led by Dsposal in partnership with OPRL, Recoup and Ecosurety and funded through Innovate UK's Smart Sustainable Plastic Packaging (SSPP) programme.

[More Info](#)

THE FUTURE IS NOW: Building Sustainable Mass Transit Systems

Monday, November 27th at 6:00 am PST (online), hosted by NEXTIER

Sustainable transportation plays a central role in addressing multifaceted global challenges. Designed correctly, it alleviates congestion, reduces greenhouse gas emissions, conserves resources, and improves urban and rural livelihoods. Sustainable transportation is pivotal to achieving other sustainable development goals. Those goals (or that challenges of achieving them) come into sharper relief when one considers, within two and a half decades, Nigeria will need to cater for about 400 million people. A critical question facing the government (and its policymakers, development partners, and the private sector) is how to move people, goods, and services efficiently and sustainably in a way that ensures improved quality of life. What is the optimal model for developing a system that works for today and is ready for the future?

[More Info](#)

Webinar: Careers in Transportation: A New Course to Inspire and Engage the Next Generation of Transportation Professionals

Thursday, November 30th at 11:00 am PST, hosted by ITE Education Council

It is known that the transportation industry faces impending workforce shortages. In response, the University of Florida Transportation Institute (UFTI) created the Careers in Transportation course. This semester-long program, initially piloted at the University of Florida, offers academic credit and online access for a Certificate of Completion to students across the nation, with a focus on those affiliated with the Council of University Transportation Centers (CUTC) network. This online course familiarized students with the transportation industry through 14 classes, comprising three key components: 1) insights from transportation experts, 2) assignments addressing significant transportation issues, and 3) exercises to enhance career skills. In this webinar, the speaker will share the story of how they went about creating a course on "Careers in Transportation" and the primary points of what the students of this course took away from it.

[More Info](#)

Transport for Intelligent Environments – Next steps in smart and post-smart

Friday, December 1st at 3:00 am PST (online), hosted by The Open University

We invite researchers and practitioners to join a discussion of intelligent transport within smart and sustainable built environments, interrogating its role in helping stabilize the global climate as well as the technical and institutional challenges associated with it. We will explore the new way of thinking required to unlock the transformative potential of transport in smart cities.

[More Info](#)

Webinar: Turbo Roundabouts: Design Considerations and Applicable Uses

Tuesday, December 5th at 11:00 am PST, hosted by ITE Roundabout Committee

The first presentation is an overview of the FHWA Scan Tour of Turbo Roundabouts in Europe. Joe Hummer from NCDOT participated in the tour and will provide a summary of the tour and findings and applicability to USA roundabouts. The second presentation is from CalTrans, Aaron Henkel who has studied and led the design of a turbo roundabout in California that is about to be opened in early 2024. Aaron will review the design considerations for the roundabout and lessons learned to date. The third presentation involves crashes at multilane roundabouts which typically precede the consideration for turbo roundabout operation. In the presentation, "Anatomy of Multilane Roundabout Crashes", it will include a review of the 2x2 safety concerns, such as the high number of pdo crashes when compared to a 2x1, and the risk of injuries. The webinar will wrap up with a summary of activities delivered by this committee in 2023 and look forward to 2024 with potential technical projects.

[More Info](#)

Those Other Logistics Jobs!

Tuesday, December 5th at 4:00 pm PST (online), hosted by Troops2Logistics

Short Presentation on Trends in Jobs and Openings/ Guest Speaker/Panelists/ The Online Job Blog Site (Posting Resumes & Openings)/ Q&A Time with Panelists. Meet corporate leaders in the logistics and supply chain communities. Find out about openings and job application processes.

[More Info](#)

Webinar: Best Practices for Presenting to a Technical and Non-Technical Audience

Thursday, December 7th at 11:00 am PST, hosted by ITE Development Committee

Presentations are an important part of our day-to-day work, hence delivering effective presentation is a

valuable skill for all professionals. Transportation professionals deliver different presentations for very different audiences, for example: Clients (local and state agencies)/ Public (community, elected officials, stakeholders potentially affected by a project)/ Internal audience (team, manager, executive leadership)/ Other (professional organizations such as ITE) Although presenting is a common part of most professional lives, poor presentations are a common reality. Common issues observed in presentations can include: / Poor language/design. / Inadequate language: too technical or not technical enough. / Reading from slides. / Excessive amount of content. / Lack of professional experience (e.g. recent graduates). In this webinar, a diverse group of transportation professionals from private and public sectors will share their experiences and best practices on effective presentations, both visually and verbally.

[More Info](#)

Webinar: Next Stop—Inclusive Virtual Public Involvement

Tuesday, December 12th at 9:00 am PST, hosted by TRB's Transit Cooperative Research Program

Virtual public involvement creates new possibilities for two-way communication, in real time, with fewer barriers, and offers innovative ways to reach riders, engage advocates, and shape policy. TRB will host a webinar that will share highlights and key findings from TCRP Research Report 241: Inclusive Virtual Public Involvement for Public Transit. Presenters will dive into effective virtual public engagement strategies tested by both transit agencies and community organizations. Presenters will also share innovative practices that worked during the pandemic and possible ways to apply or adapt techniques to make public-involvement efforts more inclusive and effective.

[More Info](#)

Webinar: A Safe Systems Approach: Working Across Disciplines to Improve Safety and Health Equity Outcomes

Thursday, December 14th at 11:00 am PST, hosted by ITE and Vision Zero Network

Thousands of people die on our roadways every year. The substantial and continued loss of life from transportation requires new approaches to traffic safety. Watch this ITE-hosted webinar exploring important new research that highlights how transportation professionals can shift their approach to roadway safety work by incorporating public health principles into transportation planning and engineering. Join panelists - including Tiffany Smith from the Vision Zero Network, David Ederer from the CDC & Meghan Mitman of Fehr & Peers - as we discuss what this means in roadway safety work, including the need for cross-disciplinary efforts aligned with transportation decarbonization, equity goals & more.

[More Info](#)

Fast Facts

Created for Students, by Students

Balancing Accountability and Flexibility in California's Local Option Sales Taxes

Author: Martin Wachs

Year: 2020

Keywords: California, Tax Measures, Transportation, Ballot Measures



Check this week's featured Fast Facts [here](#).
Looking for more Fast Facts? Check out the Fast Facts Page on metrans.org!

[Take me to Fast Facts](#)

Pathways to Opportunity

Research and Communications Intern
SHARED-USE MOBILITY CENTER

Apply ASAP
[see more info](#)

Clean Mobility Equity Alliance Intern
SHARED-USE MOBILITY CENTER

Apply ASAP
[see more info](#)

[More Internships and Scholarships Here](#)

Sr Director, Environmental Compliance
/ Sustainability
LA METRO

Apply ASAP
[see more info](#)

Principal Planner
Placer County

Apply ASAP
[see more info](#)

[More Job Opportunities Here](#)

Newsletter Staff

Namjoo Park • *Newsletter Lead* • namjoopa@usc.edu
Gilang Desnanta • *Student Writer* • desnanti@usc.edu
Tangguh Adiwiguno • *Social Media Team* • adiwigun@usc.edu

METRANS Associates

Major Funders



Associate Partners



Academic Partners



Copyright © 2022 METTRANS Transportation Consortium, All rights reserved.

New users and interested parties: [subscribe here](#).

Want to change how you receive these emails?
You can [update your preferences](#) or [unsubscribe from this list](#).