



METRANS on the Move: **our weekly newsletter written** **and produced by students**



In the News

The articles in this newsletter are prepared or accomplished by others in their personal capacity. The opinions expressed are the author's own and do not necessarily reflect the views of METRANS or its partners.



LA Metro Bus: A Century of Innovation And Efficient Urban Mobility

Los Angeles, a city known for its grandeur and diversity, has witnessed a remarkable evolution in its public transportation system since its early days. Over the years, private and public companies have operated a diverse range of transit systems, including steam railroads, cable cars, electric streetcars, interurban trolley buses, bus rapid transit, mass rail transit, and commuter rail.

Read more [here](#).



Slow Down, SoCal: Speed Cameras Are Coming to LA, Long Beach, Glendale

Speed cameras will now be allowed under a pilot program that was signed into law by Gov. Gavin Newsom this weekend, and they are going to cost speeding drivers as much as \$500 per infraction. Los Angeles, Long Beach and Glendale are the three cities in Southern California participating in the pilot.

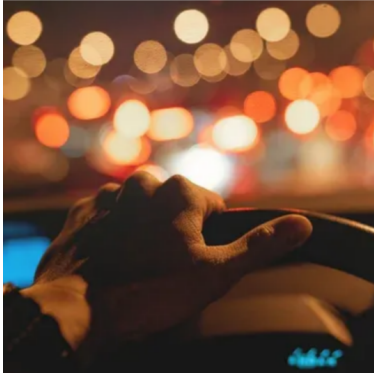
Read the LAist feature [here](#).



United Air Forecasts Profit Miss on High Fuel Costs, Israeli War

US carriers suspended service to Tel Aviv earlier this month after the Hamas attack on Israel, and United has said it won't restart flights "until conditions allow." United has the most service to Tel Aviv among US-based airlines, accounting for 2% of the carrier's annual capacity, with flights from San Francisco, Washington, Chicago and Newark, New Jersey. United operates 28 weekly flights between the US and the Israeli city.

Read the Bloomberg feature [here](#).



We suffer from car blindness in Los Angeles

One hundred years ago in Los Angeles, children playing in the streets was a normal activity, and if a child was hit by a car, the blame would be on the driver of the car. Today, if that same child was hit, society would point the finger of blame at the parents for allowing their children to play in the street. We are car blind in Los Angeles; as a City, we seem to have accepted cars as essential for society to function, and we overlook their downsides and harms they cause on our society.

Read the Michael Schneider Medium feature [here](#).

Webinars & Online Events

Webinar: Universal Access for Separated Bikeways and Bus Boarding Islands

Thursday, October 19th at 11:00 am PDT (online), hosted by ITE Complete Streets Council

The world of complete streets design is evolving at an unprecedented pace. Reallocating right-of-way to accommodate the diverse needs of transit riders, cyclists, and pedestrians is a dynamic challenge that we are witnessing regular innovation and iterations of. Among the most rapidly evolving aspects of this field are bus boarding platforms and parking-protected cycle tracks. With various iterations of design emerging across the United States, it is essential to embrace a universal design lens to ensure accessibility for all.

[More Info](#)

Webinar: Airport Insurance Requirements

Monday, October 23rd at 10:00 am PDT (online), hosted by TRB

Airport insurance programs can be complex with types of coverage, limits, retention amounts, and legal and contractual issues. TRB will host a webinar that will provide valuable insights and best practices for airport risk management personnel in developing an airport insurance program. Presenters will share ways to develop a robust insurance program ensuring compliance and protecting airports from financial liabilities.

[More Info](#)

Webinar: Electrification - Updates from an ITE Perspective and Other Considerations

Tuesday, October 24th at 11:00 am PDT, hosted by ITE Transportation Planning

Council/Sustainability Standing Committee

Electric Vehicles (EVs) and efforts for electrification of the surface transportation fleet (both light and heavy-duty vehicles, as well as micro-mobility) can and will contribute to a more sustainable future. The

question remains - What are the fully realized environmental benefits, economic impacts, and social implications on our communities? Access to such vehicles, along with the impacts of charging infrastructure, both static stations (parking and curbside) and dynamic wireless (in-motion), will dramatically alter how the built environment services its users. The ITE Electric Vehicle (EVE) working group focuses on electric vehicles, electrification, and emission reductions. This webinar, led by the ITE EVE working group, will provide an update on their activities, new resources for transportation professionals, and considerations for utility coordination, rural and urban areas, equity, multimodal, policy, and global aspects that impact electrification.

[More Info](#)

UCI Graduate Colloquium - Equity and the Future of Mobility

Thursday, October 26th at 12:00 pm PDT (in-person & online), hosted by Institution of Transportation Studies (ITE) - Irvine

Please join us for a panel discussion on equity and the future of mobility. This colloquium will bring together experts from a variety of fields to discuss the challenges and opportunities of creating a more equitable and sustainable transportation system. Panelists will discuss the impact of transportation disparities in communities across the United States as well as the role of policy and planning in creating a more equitable transportation system where everyone has access to the transportation they need to live a healthy and productive life, regardless of race, income or zip code.

[More Info](#)

The 36th RI Transportation Forum at URI Memorial Union

Friday, October 27th at 4:30 pm PDT (online), hosted by the University of Rhode Island

This Forum will be the 36th gathering after the establishment of our partnership among government (RIDOT and FHWA), construction industries (CIRI), consulting firms (RICE now ACEC) and universities (URI) in our centennial year 1992. Traditionally, this Forum has been opened to all transportation professionals, particularly in New England. If you have anything to present your works and/or any suggestions, please let us know. If you need any further information and/or details, please let us know. We appreciate your support and contribution to the transportation forum and program, in advance. The theme of this year Forum is Intelligent Transportation Infrastructure and System (ITIS) for Eternal Peace and Prosperity. We expect to have a wide variety of participants from construction industries, consulting firms, federal, state, municipal agencies, and academia. This forum will be the 35th gathering after the establishment of our partnership among government (RIDOT and FHWA), Construction Industries of Rhode Island (CIRI), American Council of Engineers Companies (ACEC) and University of Rhode Island (URI) in 1992. Traditionally, this Forum has been open to transportation professionals, particularly in New England.

[More Info](#)

Webinar: What a Traffic Engineer Needs to Know about Cyber Security

Thursday, November 2nd at 11:00 am PDT, hosted by ITE Traffic Engineering Council

Traffic Engineers may not have the full technical knowledge for the traffic signal systems of today and tomorrow. Where in the past, they may have been standalone appliances, today, the traffic signals and intelligent transportation systems are more connected than ever. These connections are reaching back to traffic operations centers and central signal software allowing for benefits like remote monitoring, diagnostics, and real-time timing changes. The increase in communications also exposes the system to digital and physical attacks that can disrupt the transportation network for citizens. This can result in increased delay or even reduce safety. A single successful attack on a traffic asset can cost local and state transportation departments significant resources and invaluable credibility as they recover. Traffic engineers must expand their knowledge and skills beyond routine civil engineering work to consider physical and digital cyber security measures when maintaining or upgrading their transportation systems and the public is depending on that.

[More Info](#)

Transport & Logistics: Skills for the Future

Wednesday, November 8th at 4:00 am PDT(online), hosted by Business West LSIP

Travel and transport sectors are facing some of the most significant changes since the adoption of the internal combustion engine. Changes are coming through sustainability and electrification, autonomous vehicle adoption, changing delivery models and consumer demand and these will all require new skillsets and digital capabilities. Join us to discuss how you think this industry and its workforce is changing and how we can prepare for the future by shaping training towards the most important needs of business. This focus group will start with an industry update on how technology is changing travel, transport and logistics and then continue with facilitated discussion on what we as a sector may need in the future to continue to thrive.

[More Info](#)

2050 Long Range Transportation Plan Virtual Workshop

Tuesday, November 14th at 12:30 am PDT, hosted by Palm Beach Transportation Planning Agency

Join the Palm Beach TPA's Vision 2050 Long Range Transportation Plan (LRTP) public workshop to share input on the transportation needs and desires you would like to see implemented in Palm Beach County.

[More Info](#)

Submit a proposal for a presentation at the 65th annual Transportation Research Forum

Deadline: Saturday, December 2nd, hosted by George Mason University

Join transportation practitioners, researchers, academics, and students for the 65th International Meeting of the Transportation Research Forum in Arlington, Virginia, April 4 & 5, 2024! Our compact day-and-a-half format gives attendees an efficient way to gain insights into best practices in transportation research, applied practices, and innovation while also exploring the city's magnificent transportation history. Optional tours will also be available on Thursday and Saturday mornings.

[More Info](#)

Fast Facts

Created for Students, by Students

Making Bicycling Equitable: Lessons from Sociocultural Research (White Paper)

Authors: Sarah Reboloso McCullough, Adonia Lugo, Rebecca van Stokkum

Year: 2018

Keywords: Public transit, land use, and urban mobility, transportation planning, policy, and finance



Check this week's featured Fast Facts [here](#).
Looking for more Fast Facts? Check out the Fast Facts Page on metrans.org!

[Take me to Fast Facts](#)

Pathways to Opportunity

Finance and Administration Intern
Livermore Amador Valley Transit Authority

Apply ASAP

[see more info](#)

Transportation Engineering Intern
Parsons

Apply ASAP

[see more info](#)

[More Internships and Scholarships Here](#)

Planning Supervisor (Housing)
Southern California Association of
Governments (SCAG)

Apply ASAP

[see more info](#)

Space Planner
California State University, Monterey Bay

Apply ASAP

[see more info](#)

[More Job Opportunities Here](#)

Newsletter Staff

Namjoo Park • *Newsletter Lead* • namjoopa@usc.edu
Gilang Desnanta • *Student Writer* • desnanti@usc.edu
Tangguh Adiwiguno • *Social Media Team* • adiwigun@usc.edu

METRANS Associates

Major Funders



Associate Partners



Academic Partners



Copyright © 2022 METTRANS Transportation Consortium, All rights reserved.

New users and interested parties: [subscribe here](#).

Want to change how you receive these emails?
You can [update your preferences](#) or [unsubscribe from this list](#).