



METRANS on the Move: **our weekly newsletter written and produced by students**



In the News

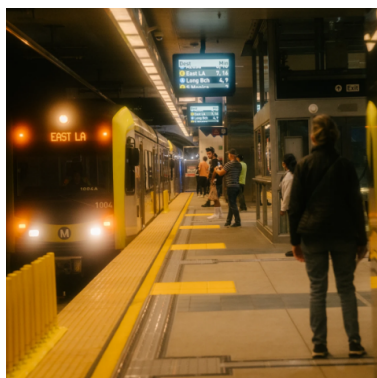
The articles in this newsletter are prepared or accomplished by others in their personal capacity. The opinions expressed are the author's own and do not necessarily reflect the views of METRANS or its partners.



From Humble Origins to LA's Longest Street, Uncovering the Legacy of Sepulveda Boulevard

In the vibrant urban tapestry of Los Angeles, where sprawling neighborhoods and shimmering city lights converge, a meandering thoroughfare known as Sepulveda Boulevard weaves a captivating narrative of urban evolution and historical significance.

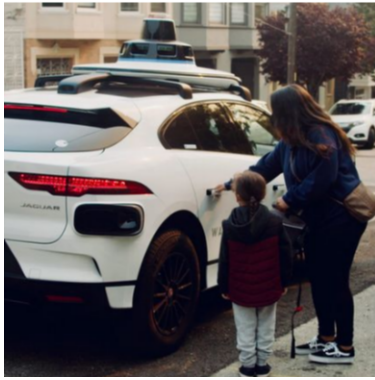
Read more [here](#).



Heads Up Riders, A Few Metro C Line Stations Are Closing Saturday For Repairs

Starting Saturday Aug. 12 and lasting until late September, certain stations on the Metro C Line will be closed for repairs. Metro is closing the stations in stages for overhead power-line upgrades. The stations are expected to reopen Sept. 25. The repairs come as the C Line reaches its 30th anniversary.

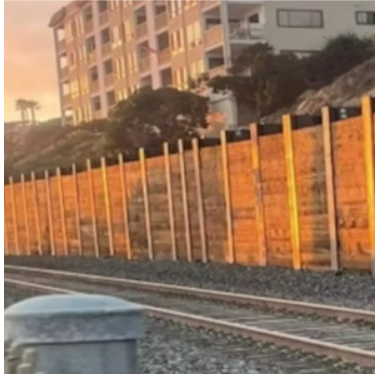
Read the LAist feature [here](#).



Robotaxi ride-hailing expansion approved by California regulators despite local objections

Cruise, a subsidiary of General Motors, and Waymo, owned by Google parent company Alphabet, began operating robotaxis in limited areas of San Francisco in 2022. Cruise says it has completed more than 1 million driverless miles, and its vehicles were involved in 54% fewer collisions than human drivers in comparable circumstances.

Read the SMARTCITIES DIVE feature [here](#).



Orange County Transportation Authority moving forward study to keep coastal trains operating safely

The Orange County Transportation Authority (OCTA) is moving forward with its two-phased plan to study threats and solutions to keep coastal trains operating safely. OCTA selected HDR Engineering Inc. to lead the South Coast Rail Infrastructure Feasibility Study and Alternative Concepts Analysis, which is Phase 1 of a study, will focus on the seven-mile rail corridor between Dana Point and San Clemente, Calif.

Read the MASS TRANSIT feature [here](#).

Webinars & Online Events

Mending Metro

Thursday, August 17th at 12:00 pm PDT (online), hosted by USC Price

With traffic continuing to snarl Los Angeles County's freeways and an urgent need to reduce auto emissions to curb climate change, the need for public transportation has never been more urgent. But a recent sharp increase in crimes on our local train system has made riders more reluctant than ever to ride the rails. Is there a fix? Join us for an in-depth discussion about how to mend our metro system so that it can realize its promise to provide affordable, efficient and low-emission transportation.

[More Info](#)

Webinar: TRID—Your Lifelong Learning Tool for Transportation Research

Tuesday, August 22nd at 11:00 am PDT, hosted TRB's Executive Office

TRID helps researchers locate solutions to problems, avoid duplication of work, save resources, and satisfies Federal Highway Administration (FHWA) requirements to consult TRB's TRIS Databases to identify ongoing or previously completed research on a given topic. TRB will host a webinar that will help users understand what is in TRID and how to use its search functions. Learn ways to find the most relevant publications and other products from transportation research projects.

[More Info](#)

Maximising Warehouse Productivity with a Strategic Approach

Tuesday, August 22nd at 6:00 pm PDT (online), hosted Kilimanjaro Consulting

Achieving optimal warehouse efficiency in a period of market decline is paramount; any inefficiency directly impacts your customers and bottom line. Taking the steps to maximise productivity now will position your company for success when the market improves. A strategic approach to warehouse

management helps make the most of your resources, reduce errors, and deliver exceptional customer experiences. Join our free webinar and discover the strategies and processes to reduce errors, maximise productivity, and increase operational efficiency.

[More Info](#)

Women in Rail: Panel Discussion

Wednesday, August 23rd at 11:30 am PDT (in-person), hosted WTS-LA

Please join us for an in-person luncheon and panel discussion with High Speed Rail, Metrolink, LA Metro, and Union Pacific Railroad! Panelists: LaDonna DiCamillo, Southern California Regional Director, High Speed Rail, Elizabeth Lun, Assistant Director of Design, Metrolink, Avital Barnea, Senior Executive Officer of Multimodal Integrated Planning, LA Metro, Lupe Valdez, Senior Director of Public Relations, Union Pacific Railroad

[More Info](#)

Webinar: Utilizing Traffic Simulation Models to Analyze Complex Roadway Situations

Tuesday, August 29th at 11:00 am PDT, hosted by ITE SIMCAP Committee

This webinar will discuss real world examples of how traffic modeling and simulation have been used to evaluate traffic performance for unique and complex situations. One example will present the modeling of multiple maintenance of traffic phases to determine the impacts to traffic while a construction project is underway. A second example will demonstrate how innovative design treatments are being modeled and implemented in actual projects.

[More Info](#)

Community Impact of Heavy Duty Vehicle Electrification

Wednesday, August 30th at 10:00 am PDT (online), hosted E2S Climate Hub

Tune in as Dr. Jane Line, civil, materials, and environmental engineering professor from the University of Illinois at Chicago, and Haley Dahl, student at the University of Illinois at Chicago and creator of Green Exploration: Rockford, discuss how the Rockford Region can prepare for the electrification of its heavy vehicles to reduce regional diesel emissions. We will highlight Dr. Lin's involvement in two electrification projects, one funded by the US EPA and the other by IDOT, and focus on the environmental and public health benefits of making this transition.

[More Info](#)

IAME Conference 2023

Tuesday, September 5th - 8th (in-person), hosted by METRANS

The METRANS Transportation Consortium at the University of Southern California (USC) and California State University Long Beach (CSULB) is honored to be able to host the International Association of Maritime Economists Conference 2023 (IAME Conference 2023) to be held in Long Beach, California, September 5-8, 2023. Since its foundation in 1992, IAME has developed into an international association with over 300 individual members from every continent and more than 10 corporate members. The Association is officially linked to two leading academic journals within the field: Maritime Policy & Management and Maritime Economics & Logistics.

[More Info](#)

Los Angeles Union Station Train Festival 2023

Saturday, September 9th at 10:00 am PDT (in-person), hosted Los Angeles Union Station

All aboard! Grab your family and friends and join Los Angeles Union Station for #TrainFestival2023 on September 9 and 10 to celebrate the past, present and future of train travel with activations and programs throughout the iconic Los Angeles landmark. In partnership with @MetroLosAngeles @Amtrak and @Metrolink, @UnionStationLA invites guests of all ages to check out rail equipment on the tracks from various decades since the opening of the station, marvel at the rarest of model train exhibits and participate in tours about the history, restoration and art throughout the building.

[More Info](#)

Webinar: Green Logistics

Friday, October 13th at 2:00 pm PDT, hosted Cranfield School of Management

As logistics contributes considerably to greenhouse gas (GHG) emissions, addressing logistics environmental sustainability is a big concern for practitioners and policymakers. The term “Green Logistics Practices” (GLPs) indicates many logistics-related initiatives to reduce the impact on the natural environment, yet we are experiencing an “understanding into an action conundrum”: there is a clear understanding of what should be done, and why, but less clarity in terms of how to go about it. Moreover, companies lack clarity about how to align logistics environmental sustainability with strategic objectives. As this prevents them from coherently turning sustainability into action, we discuss a framework underpinned by five main dimensions: degree of awareness, degree of formalisation, measurement systems, governance and accountability, and budget allocation.

[More Info](#)

Fast Facts

Created for Students, by Students

Making Bicycling Equitable: Lessons from Sociocultural Research (White Paper)

Authors: Sarah Reboloso McCullough, Adonia Lugo, Rebecca van Stokkum

Year: 2018

Keywords: Public transit, land use, and urban mobility, transportation planning, policy, and finance



Check this week's featured Fast Facts [here](#).

Looking for more Fast Facts? Check out the Fast Facts Page on metrans.org!

[Take me to Fast Facts](#)

Pathways to Opportunity

Civil Transportation Engineers

Parsons

Apply ASAP

[see more info](#)

Intern

Metro

Apply ASAP

[see more info](#)

[More Internships and Scholarships Here](#)

Planner – Assistant / Associate / Senior Placer County

Apply ASAP

[see more info](#)

Manager, Transportation Planning (Parking Management)

LA METRO

Apply ASAP

[see more info](#)

[More Job Opportunities Here](#)

Newsletter Staff

Namjoo Park • *Newsletter Lead* • namjoopa@usc.edu

Gilang Desnantia • *Student Writer* • desnanti@usc.edu

Tangguh Adiwiguno • *Social Media Team* • adiwigun@usc.edu

METRANS Associates

Major Funders



Associate Partners



Academic Partners



Copyright © 2022 METTRANS Transportation Consortium, All rights reserved.

New users and interested parties: [subscribe here](#).

Want to change how you receive these emails?
You can [update your preferences](#) or [unsubscribe from this list](#).