



METRANS on the Move: **our weekly newsletter written** **and produced by students**



In the News

The articles in this newsletter are prepared or accomplished by others in their personal capacity. The opinions expressed are the author's own and do not necessarily reflect the views of METRANS or its partners.



L.A. Metro's GoPass Pilot Program Exceeds 10 Million Free Rides

As of March 7, the Los Angeles County Metropolitan Transportation Authority (L.A. Metro) and its municipal transit partners have provided more than 10 million free transit rides to students over the last eight months through the GoPass Pilot program, surpassing a goal that CEO Stephanie Wiggins set in her 2022 State of the Agency Address.

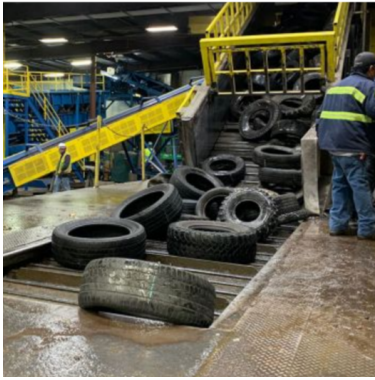
Read the **MASS TRANSIT** feature [here](#).



\$700 Million for Community EV Charging Now Available from Federal Grant Program

The U.S. Department of Transportation opened applications today for the Charging and Fueling Infrastructure Discretionary Grant Program, a \$2.5 billion, five-year program to support community and neighborhood electric vehicle charging infrastructure. The first round of funding will make \$700 million available from fiscal years 2022 and 2023 to cities, counties, local governments and tribes.

Read the **SMARTCITIES DIVE** feature [here](#).



Tire Sustainability Remains Top Priority for Industry

“End-of-life” tires that can no longer be retreaded are often stored in a drop trailer and taken away to a recycling facility. Tire industry experts say that’s the preferred environmental — and increasingly good business — practice. “We have an objective of 100% of scrap tires being delivered into sustainable and circular end-use markets,” noted John Sheerin, director of end-of-life tire programs for the U.S.

Read the Transport Topic feature [here](#).



E-Trikes Are Coming to Rescue the Aging Suburbs

When the Electrify Expo came to Seattle’s Husky Stadium last summer, Jim Cochrane, 76, and his son went to check it out. The event is like an auto show but for the electric vehicle crowd. Cochrane, who lives close by, tried out an electric microcar — a now-trending product for EV enthusiasts.

Read the Bloomberg feature [here](#).

Webinars & Online Events

Webinar: Enhancing the Safety of Vulnerable Road Users at Intersections

Friday, March 17th at 11:00 am PDT, hosted USDOT ITS JPO

The U.S. Department of Transportation (DOT) will host a webinar on March 17 to discuss how DOT envisions leveraging emerging technologies to enhance the safety of vulnerable road users at roadway intersections. Improving the safety of pedestrians, bicyclists, and other vulnerable road users is of critical importance to achieving the objectives of the DOT National Roadway Safety Strategy (NRSS) and DOT’s vision of zero fatalities and serious injuries across our transportation system. According to data from the National Highway Traffic Safety Administration (NHTSA), in 2020 there were 10,626 traffic fatalities in the United States at roadway intersections, including 1,674 pedestrian and 355 bicyclist fatalities. These fatalities at intersections represent 27% of the total of 38,824 road traffic deaths recorded in 2020. Early estimates in 2021 point to even worse numbers overall, with pedestrian fatalities up 13% and pedal cyclist fatalities up 5% compared to 2020 (NHTSA, May 2022).

[More Info](#)

Spotlighting Women Leaders in Transportation

Wednesday, March 22nd at 9:30 am PDT (online), hosted by YPT-NYC

Join YPT-NYC and WTS-GNY for Spotlighting Emerging Women Leaders in Transportation. During this virtual lunchtime panel, we’ll hear from and celebrate inspiring women who are leading the way in transportation. Panelists include Sarah Meyer (Former Chief Customer Officer, MTA), Tara Pham (CEO at Numina), Allyson Bechtel (Director, Rail Network Planning & Operations Improvement at NYCT)

[More Info](#)

Webinar: Mobility Hubs: Facilitating Seamless Access between Modes

Tuesday, March 28th at 11:00 am PDT/ 2:00 pm EDT, hosted by ITE

Mobility hubs serve a critical function in the regional transportation system as origin/destination and

transfer points. They are places of connectivity where various modes of transportation—walking, cycling, riding transit, taxi services, and others—come together seamlessly and where there is mixed-use activity such as working, living, shopping, and playing. The amount and density of development feeds off the availability of and interaction between the various modes. Because mobility hubs may include many travel modes, they are prime opportunities for the application of technology innovations, including bikesharing and scooter sharing stations, carsharing and transportation network companies (TNCs), travel information, fare payment apps, and more.

[More Info](#)

South East Community Transport Forum

Thursday, March 30th at 2:00 am PDT (online), hosted by Community Transport Association

The aim of this forum is to provide a place where we can come together to discuss issues and work together collectively to find and deliver solutions. To do this the forum is open to all Community Transport providers and other charities, not for profit organisations and stakeholders who have an interest in community and accessible transport in the South East region. This is the first CTA led forum and at this meeting we will discuss: CTA's vision for our forums and how they will connect into our national voice, A Vision for Volunteering in CT, what are our challenges and how we connect with the England Vision for Volunteering, The current issues for CT in the South East Region, The Future of the Group

[More Info](#)

Webinar: Importance of Access to Healthcare

Thursday, March 30th at 12:00 pm PDT/ 3:00 pm EDT, hosted by ITE

Access to healthcare is becoming even more critical as population continues to age. Providing access to healthcare is an essential service that should be provided for everyone. Funding is often an obstacle with providing necessary service. Dr. Cyneetha Strong, a family physician who is an Assistant Professor at FSU College of Medicine, and Dr. Sandra Whitehead, a national expert on the intersection of health and the built environment, and professor and program director of the Sustainable Urban Planning at George Washington University will frame out Social Determinants of Health, why it's so important to have access to health care, how lack of transportation is "the canary in the coalmine" for other Social Determinants of Health, provide examples of places that have good access and discuss alternatives means of access.

[More Info](#)

International Association of Maritime Economists Conference 2023 -The Call for Abstracts and Papers

Friday, March 31st, hosted by METRANS

The theme for this year's conference is "New Realities in the Global Maritime Economy." Researchers and industry leaders will explore what is next for the maritime economy in an environment of lingering pandemic, geopolitical conflicts, rapid technological change, and increasing urgency to manage global climate change. The 2023 conference will inspire participants from around the world with innovations and new collaborations between academia, government, and industries in response to a rapidly changing world. The Call for Abstracts and Papers is now open! Abstracts and Papers are due March 31, 2023.

[More Info](#)

Webinar: Improving Safety on Rural Roads Through Signing and Striping

Tuesday, April 11th at 11:00 am PDT, hosted by ITE

Within the U.S. and Canada, there are approximately 3.3 million miles of rural roadways (over 70% of total roadways). More than half of all traffic fatalities in the U.S. and Canada occur on rural roads.

Approximately 2,700 fatalities per year occur at rural intersections in the U.S. and Canada, and this represents nearly 10 percent of all traffic fatalities in these countries. Many rural roads do not have posted

speed limits, and are subject to statewide statutory speed limits of 50 to 75 miles per hour (80-120 km/h). Stop signs on rural roads are often unexpected. The minimum standard is often a single stop sign measuring 30" x 30", mounted five (5) feet high and at least twelve (12) feet off the edge of pavement. Many of these roads are also unstriped. Large improvements in safety performance can be achieved through additional or larger signage and traffic striping, including wider edge lines. Edge and centerline rumble strips have also proven to be quite effective in improving safety.

[More Info](#)

Ask VTA: Climate, Sustainability & Innovation

Thursday, April 13th at 8:00 pm PDT (online), hosted by Santa Clara Valley Transportation Authority (VTA)

VTA is committed to protecting the environment for future generations. Our team is currently working on a transportation-specific Climate Action and Adaptation Plan (CAAP) that seeks to reduce greenhouse gas emissions and prepare for the impacts of climate change. Are you curious about how rising sea levels or extreme heat may impact public transportation? Want to know more about the range of electric buses? VTA has assembled a team of subject matter experts to answer your questions!

[More Info](#)

IAME Conference 2023

Tuesday, September 5th - 8th (in-person), hosted by METRANS

The METRANS Transportation Consortium at the University of Southern California (USC) and California State University Long Beach (CSULB) is honored to be able to host the International Association of Maritime Economists Conference 2023 (IAME Conference 2023) to be held in Long Beach, California, September 5-8, 2023. Since its foundation in 1992, IAME has developed into an international association with over 300 individual members from every continent and more than 10 corporate members. The Association is officially linked to two leading academic journals within the field: Maritime Policy & Management and Maritime Economics & Logistics.

[More Info](#)

Fast Facts

Created for Students, by Students

Public Transit Safety Among University Students

Authors: Anastasia Loukaitou-Sideris, Madeline Brozen, Hao Ding, Miriam Pinski, Fariba Siddiq

Year: 2020

Keywords: public transit, land use, and urbanmobility safety and security



Check this week's featured Fast Facts [here](#).
Looking for more Fast Facts? Check out the Fast Facts Page on metrans.org!

[Take me to Fast Facts](#)

Pathways to Opportunity

SCAG Scholarship Program SCAG

Apply by 03/26/23
[see more info](#)

Intern (Planning) AC Transit

Apply ASAP
[see more info](#)

[More Internships and Scholarships Here](#)

Analyst in Transportation Policy Congressional Research Service (CRS)

Apply by 03/23/23
[see more info](#)

SunLine Transit Agency Chief Executive Officer

SunLine Transit Agency
Apply ASAP
[see more info](#)

[More Job Opportunities Here](#)

Newsletter Staff

Namjoo Park • *Newsletter Lead* • namjoopa@usc.edu
Agil Wibowo • *Social Media Lead* • agilwibo@usc.edu

METRANS Associates

Major Funders



Associate Partners



Academic Partners



Copyright © 2022 METRANS Transportation Consortium, All rights reserved.

New users and interested parties: [subscribe here](#).

Want to change how you receive these emails?
You can [update your preferences](#) or [unsubscribe from this list](#).