

METRANS

Transportation Center

USC | CSULB

METRANS on the Move: Our Weekly Newsletter for Students



Dr. Deguzman at USC Commencement 2017 with Nicole Guo, USC Viterbi MSCE Transportation Engineering 2017, Transportation Engineering Intern at DKS Associates, left, and Rui (Rae) Zhang, USC Price MPL 2018, Editor-in-Chief of METRANS News and Transit Finance Intern, Foothill Transit

Welcome to METRANS On the Move, a weekly transportation newsletter produced by students. This week we feature a student perspective on INUF research, PSR partner UCLA's TRB reception, and numerous opportunities for engagement and employment. We greatly appreciate you, our reader, and hope you enjoy this newsletter.

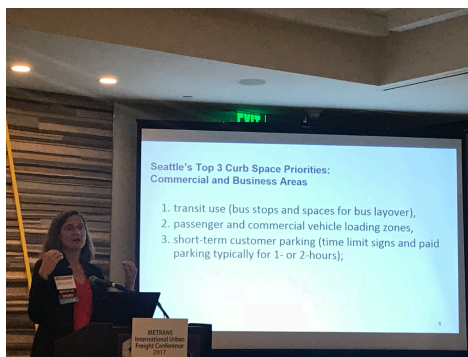
We invite contributions from throughout the transportation community of both content and original articles. Contact me or any member of our student team to share your events, opportunities, news, and stories on this METRANS platform and reach an audience of thousands of transportation enthusiasts like you!

Victoria Deguzman
METRANS Associate Director
victoriv@price.usc.edu

Subscribe Now!

In the News

The articles in this newsletter are prepared or accomplished by others in their personal capacity. The opinions expressed are the author's own and do not necessarily reflect the views of METRANS or its partners.



Goodchild Presents Research at 7th International Urban Freight Conference

By Sue Dexter, USC Price PhD Student in Urban Planning and Development

METRANS held the 7th International Urban Freight Conference (I-NUF) from October 18-20, 2017 in Long Beach, California. The conference featured scholars and industry professionals from 18 countries presenting research on a broad range of topics, including effects of the growth of e-commerce, transformational technology, and other influences on urban freight movement.

Read more [here](#).



UCLA Hosts 25th Annual TRB Reception

By Henry Phipps, UCLA MURP 2018

On January 9, 2018, the UCLA Institute of Transportation Studies and Lewis Center for Regional Policy Studies hosted their 25th annual reception at the Transportation Research Board Annual Meeting (TRB). The reception, held at

Busboys and Poets, gave faculty, alumni, students, and friends of UCLA's Luskin School of Public Affairs the chance to convene after the third day of conference sessions. **Read more [here](#).**



California will put 5 million electric cars on the road by 2030, Gov. Jerry Brown says

California Gov. Jerry Brown wants to put 5 million electric cars on the state's roads by 2030. Brown announced the new goal in [his State of the State speech this week](#), and formalized the target in an executive order issued Friday. "This executive order aims to curb carbon pollution from cars and

trucks and boost the number of zero-emission vehicles driven in California," Brown said in a statement. **Read more [here](#).**



U.S. Road Safety Laws Lag, While Fatalities Climb

Vehicle-related mortality is an increasingly urgent public health concern. It is the second-leading cause of accidental death in America, after [drug overdoses](#).* Yet state legislatures aren't keeping pace with necessary measures to curb the toll of deaths and injuries, according to a traffic safety group. [Read more here.](#)

Get Involved

METRANS PSR has a limited number of sponsored spots for complimentary attendance to this event. Please email Doug Feldman at feldmand@usc.edu to secure your spot.

**2018 PSR Research Seminar
Agglomeration in Southern California
Wednesday, January 31, 2018, 12:00 pm to 1:30 pm
USC Ralph and Goldy Lewis Hall (RGL) 100**

Speakers

Peter Gordon

Professor Emeritus - USC Price School of Public Policy

John Cho

Senior Regional Planner - SCAG

Prosperity and economic growth require robust specialization and exchange. This means the formation and maintenance of numerous complex supply chains. These are emergent and include supply chains for things and supply chains for ideas. The former involves transactions; the latter can be via transactions and/or realized positive externalities. Favorable networking and location opportunities are significant as these choices are made. Flexible land markets can facilitate the availability of such opportunities. Access to pools of human capital is clearly beneficial but the ability to tailor access to the peculiar requirements of the firm is even better. Detailed firm location (and co-location) data for various sectors for the Los Angeles metropolitan areas are analyzed to support our claims. We estimate Ripley-k functions and consider differences by industry as well as firm size. We pay special attention to co-location of "tech" and "venture capital" sectors.

Flyer

Free TRB Webinar

**Transportation Network Companies: Challenges and Opportunities for Airport Operators
January 31, 2018, 11:00 am to 12:30 pm Pacific Time**

TRB will conduct a webinar that features research from the [Airport Cooperative Research Program](#) (ACRP)'s [Synthesis 84](#): Transportation Network Companies: Challenges and Opportunities for Airport Operators.

This webinar will discuss how transportation network companies (TNCs) such as Uber and Lyft have become common providers of ground transportation at airports. The research summarizes the amount of revenue airports receive from TNCs and how TNCs are affecting airport operations and other businesses. Airport surveys show that terminology and signage for TNC customers across airports are inconsistent, that airport staff may need more resources to manage TNCs, and that this new mode is affecting how passengers use other important revenue sources such as public parking areas, other ground transportation operators, and rental cars.

RSVP & More Info

UC Davis ITS Seminar

A Conversation about Platforms

Hemant Bhargava

Professor, Jerome and Elsie Suran Chair in Technology Management

Graduate School of Management, UC Davis

February 2, 2018, 1:40 am to 3:00 pm Pacific Time

1605 Tilia, Room 1103, West Village, UC Davis

Platforms, or technology-enabled business marketplaces, are transforming the way we think about business. For 200 years, business had been about creating large scale in various aspects and connecting them in a linear fashion: raw materials, parts and components, resources of production and transformation, distribution, etc., and using this large-scale structure to efficiently create and supply something of value to the customer. Today's platform technologies change this in a fundamental way: business and customer value is created by enabling others to create and provide value – and then performing necessary tasks (such as discovery, matching, fulfillment, financial payments, trust etc.) to make it is easy for this to happen. This new business model raises plenty of exciting research questions, some of which I have worked on and will present in this seminar.

More Info

Free TRB Webinar

**Runway Protection Zone Risk Assessment Tool
February 5, 2018, 11:00 am to 12:30 pm Pacific Time**

TRB will conduct a webinar that features research from the [Airport Cooperative Research Program](#) (ACRP)'s [Research Report 168](#): Runway Protection Zones (RPZs) Risk Assessment Tool Users' Guide.

The research helps airport operators evaluate the risk of an aircraft accident within an RPZ. Although RPZs are supposed to be clear of structures and people, it is still common for activities to occur within an RPZ for many reasons, and these reasons can be beyond the control of the airport operator. This webinar will discuss the development of the Runway Protection Zone (RPZ) Risk Assessment Tool and the risk assessment framework that serves as the basis for the tool, and the presenters will demonstrate the tool.

RSVP & More Info

METRANS PSR has a limited number of sponsored spots for complimentary student attendance to this event. Please email Victoria Deguzman at victoriv@price.usc.edu to secure your spot.

WTS-LA Event Rail Discussion

**Tuesday, February 6, 2018, 11:15 am to 1:30 pm
Millennium Biltmore Hotel, 506 S Grand Ave., Los Angeles, CA 90071**

Join WTS-LA to discuss the latest rail activities in Southern California with California High Speed Rail and Metrolink.

Registration begins at 11:15 am.

Program begins at Noon.

Confirmed speakers include:

- Michelle Boehm, Southern California Regional Director, California High-Speed Rail Authority
- Kimberly Yu, Deputy Chief Operating Officer, Planning Project & Delivery, Metrolink
- Moderator: Noopur Jain, PE, SE, Southern California Engineering Manager and Statewide Complex Structures Manager, California High-Speed Rail Authority

More Info

Marine Terminal Operations Professional (MTO) Program Offered through the Center for International Trade & Transportation (CITT) at CSULB Courses begin on February 6, 2018

The Marine Terminal Operations Professional (MTO) Program, offered through the Center for International Trade & Transportation (CITT) at CSULB, is a comprehensive training program that will provide entrance or further advancement in the field of marine terminal operations.

The program covers all aspects of terminal operations.

For more information, contact Angeli Logan at (562) 985-2874 or email at angeli.logan@csulb.edu

Are you a veteran wishing to enroll?

If so, you may qualify for financial support through the Veterans Educational Assistance Program (VEAP).

For more information and to determine eligibility, please contact Sal Barajas at (562) 570-3651 or email at salvador.barajas@pacific-gateway.org

More Info

USDOT T3e Webinar

Are Autonomous Vehicles Safe?

Understanding What's Already Here and What Needs to Happen

Tuesday, February 6, 2018, 9:30 am to 10:30 am

The seminar will cover recently concluded and ongoing projects related to safety and regulatory concerns for the expanding market of Autonomous Vehicles (AVs). The work presented has been conducted within the past year at the RiSA2S Research Center of San José State University, a multi-disciplinary innovation center for the Risk and Safety Assessment of Autonomous Systems.

The activities of the lab are aimed at improving safety and better informing regulatory agencies in their recommendations for the certification process of autonomous systems.

RSVP & More Info

YPT - Los Angeles Regional Connector Construction Tour

Friday, February 9, 2018, 2:15 pm to 5:15 pm

Meet at Union Station and Travel as a Group to the Project Office

LA Metro will take YPT-LA members on a tour of the Regional Connector project, specifically the 1st/Central Station construction area. This tour is open to members only and is capped at 20 participants first come first served - no exceptions. Closed toed shoes and pants required.

RSVPs to this post will not be accepted. You must register for the tour via email at losangeles@yptransportation.org.

Membership is required to attend this event. Membership is renewed annually at the YPT Los Angeles website. If you think you are a current member but are unsure please email losangeles@yptransportation.org

If you'd like to sign up to become a member and join the tour, please visit: <https://my.yprtransportation.org/join>. Be sure to mark the Los Angeles Chapter when you sign up. Part of your membership fees will go directly to the LA chapter to bring you future events like this one.

Schedule is as follows:

- 2:15pm - Meet at Patsaouras Plaza directly in front of Metro Headquarters
- 2:30pm - Depart Union Station and travel as a group over to the Regional Connector Project Office
- 3:00pm - Regional Connector team will provide a project overview and go over safety instructions
- 4:00pm - Construction team will lead tour of subway tunnel and station pit at 1st/Central
- 5:15/5:30pm - Refreshments at Wurstküche (in the Arts District)

More Info

Interdisciplinary Symposium on East Asian Business (ISEAB)
USC Dornsife East Asian Studies Center
Friday, February 9, 2018, 10:00 am to 4:00 pm
USC University Park Campus, SOS B40

10:00 am - 12:00 pm Resource Utilization

Jacques Hymans, School of International Relations, USC Dornsife
Why Has Energy-Poor Japan Failed to Exploit Its Abundant Geothermal Resources?
Mao Da, Rock, Environment and Energy Institute and Nature University, China
Waste Incineration in Carbon Market: Good Incentive for Wrong Projects

1:30 pm - 4:00 pm - Chinese Real Estate Markets Panel

Vinayak Bharne, School of Architecture, University of Southern California
Real Estate; Urban Design: Three Projects in China
Annette Kim, Sol Price School for Public Policy, University of Southern California
Looking for Space in China's Real Estate Markets: Migrant Housing Markets in Shanghai and Beijing
Lu Bin, College of Urban and Environmental Sciences, Peking University
Beijing's Urban Deconcentration Analyzing its Impacts on Land Use and Real Estate Markets

See the flyer for more information.

RSVP

Flyer

METRANS PSR has a limited number of sponsored spots for complimentary attendance to this event. Please email Jiarui Li at jiaruil@usc.edu to secure your spot.

METRANS PSR Field Trip
Gerald Desmond Bridge Replacement Project
Thursday, February 15, 2018, 10:30 am to 12:00 pm

-Lunch included
-A tap card to keep
- **Your own PPE gear to keep**
-A guided bus and excursion trip to the Gerald Desmond Bridge Project

Please see the flyer for more information.

Flyer

The 19th Annual CTF Transportation Forum
Wednesday, February 21, 2018, 10:00 am - 2:30 pm
Sacramento Convention Center

Confirmed speakers and more details coming in 2018!
Join transportation professionals from the private and public sector for this very important event, register to attend or sponsor today!

Early Bird Rate ends January 31.

To register and pay by check [click here](#) to download the Mail-In Check Registration Form and follow the instructions on the form.

More Info & RSVP

UC Davis ITS 3 Revolutions Conference
February 26-27, 2018
The ARC- Activities and Recreation Center, 232 Shields Ave, Davis, CA 95616

On February 26-27, 2018 the 3 Revolutions Policy Conference will assemble leading transportation experts and leaders to explore how we can steer shared, electric, and automated technologies and services to a better future. Join us in moving beyond hype and hostility in considering how we can anticipate--rather than react to--environmental, economic, and social challenges and opportunities.

The first 200 participants to register will receive a pre-release copy of the Professor Daniel Sperling's new book, Three Revolutions: Steering Automated, Shared, and Electric Vehicles to a Better Future, set for publication in March 2018.

More Info

METRANS PSR has a limited number of sponsored spots for complimentary attendance to this event. Please email Prithvi Deore at pdeore@usc.edu to secure your spot.

Spring 2018 METRANS Speakers Series
Suzanne Dworak-Peck
Tuesday, March 6, 2018, 12:00 pm to 1:00 pm
USC Doheny Library (DML) 233

Suzanne Dworak-Peck is the Chair of the Campaign Advisory Committee for the NASW Foundation's National Social Work Public Education Campaign and Member of the USC Board of Trustees.

Lunch will be provided.
Event co-sponsored by Women in Management (WIM) and PSR center.
See the flyer for more information.

Flyer

2018 APPAM California Regional Student Conference
March 9 to 10, 2018
Claremont Graduate University, Claremont, CA

RSVP&More Info

2018 APPAM DC Regional Student Conference
April 6 to 7, 2018
American University, Washington, DC

RSVP&More Info

During these conferences, students will present research across a wide variety of policy areas, through poster sessions and on conference panels with their peers. Participating students will gain valuable research presentation experience, as well as receive important feedback from academics, practitioners, and other students. Students will have several opportunities to network and make connections with a diverse group of policy professionals, as well as other policy students.

2018 USC Price Externship Program - For USC Price Students
March 12 - 16, 2018

The USC Price 2018 Externship Program is coming March 12-16, which is during your Spring Break! Externships offer you an extended "shadowing" opportunity, and provide real-world exposure to settings relevant to your current or desired area of study. In fact, 50% of students received an opportunity with their host site last year!

This program takes place during USC's Spring Break, and, as a result, will ideally enable you to spend up to five days actively working and engaging at a host site. Student participation is open to undergraduates and graduates of the Price School of Public Policy.

If you are interested, please keep the following in mind:

1. Externships are not for credit nor are they paid.
2. You are responsible for transportation, lodging and other incidentals.
3. Your resume must be uploaded in PDF format to complete your rsvp.

Need to have a USC account to log in to check more information.

RSVP & More Info

WTS-LA 2018 Transportation Resume Book
Now Accepting Student Resumes
Applications Due March 16, 2018
Email to wtslaresumebook@gmail.com

The Transportation Resume Book is an annual outreach effort to connect all students interested in transportation internship and full-time opportunities with all of our corporate partners.

Questions? Contact Todd Nguyen, Transportation Resume Book Chair at Todd.Nguyen@wsp.com
Check the flyer for more resume requirements.

Flyer

Sample Resume

METRANS PSR has a limited number of sponsored spots for complimentary attendance to this event. Please email Yang Deng at dengyang@usc.edu to secure your spot.

METRANS Student & Alumni Field Trip
March 24, 2018
Anaheim Regional Intermodal Transportation Center
Behind-the-scenes Guided Tour

- 67,000 ft.² (6,200 m²) & \$185.2 million
- LEED Platinum certified
- 2015 Public Works Project of the Year (APWA)

Lunch and roundtrip Metrolink fare from LA Union Station included
For more information and to secure your spot, contact Yang Deng at dengyang@usc.edu

Flyer

Eno Future Leaders Development Conference 2018
Eno Center for Transportation
May 20-24, 2018

Now Enrolling

Best for: Students in transportation-related programs Career Level: Graduate-level students

Each year, the Eno Future Leaders Development Conference (LDC) gives 20 of the nation's top graduate students in transportation a first-hand look at how national transportation policies are developed. Students apply to the program early in the year, and those selected as "Eno Fellows" come to Washington, DC for a week in the spring of meetings with federal officials and leaders of business and non-profit organizations.

More Info

METRANS PSR has a limited number of sponsored spots for complimentary student attendance to this event. Please email Victoria Deguzman at victoriv@price.usc.edu to secure your spot.

NaTMEC 2018

National Travel Monitoring Exposition and Conference

June 10 - 13, 2018

Hotel Irvine, Irvine, California

Sponsored by

Pacific Southwest Region University Transportation Center (PSR UTC)

The bi-annual National Travel Monitoring Exposition and Conference (NaTMEC) provides travel monitoring professionals and transportation data users from around the world opportunities to share knowledge and good practices, exchange ideas, revisit fundamental concepts, learn new processes, procedures and techniques, and see the latest advancements in policy, technology, and equipment.

More Info

Scholarships & Academic Opportunities

ITS California 2018 Scholarships

For Studies In Intelligent Transportation Systems (ITS)

Applications Due February 1, 2018

\$2,500 for the 2018-19 academic year

Degree: Junior undergraduates, senior undergraduates pursuing a graduate degree and Masters/Ph.D. candidates in any ITS-related field including transportation planning, engineering, transit, transportation policy, etc.

Please select the appropriate scholarship information depending upon if you are a veteran or non-veteran.

Please see the flyers for more information.

Student Application

Veteran Application

State Policy Fellowship Application 2018

Applications Due February 12, 2018

To apply for a State Policy Fellowship please complete the form [here](#) and submit the required materials by February 12, 2018.

If you have questions, please email the program at fellowship@cbpp.org.

More Info

Transportation Technology Tournament

Applications Due February 15, 2018

The National Operations Center of Excellence (NOCoE) and the U.S. DOT ITS JPO PCB program announce a competition for students to work directly with state and local DOTs to solve real-world transportation problems utilizing ITS and TSMO solutions.

Student teams will assemble and work with a local or state agency to define a problem or challenge in their region, or choose to address one of the sample problems outlined below. After submitting an initial contest application identify the team and the problem or challenge, students will work with academic advisors to learn about potential ITS and TSMO solutions via online training programs outlined below. Teams will then utilize their experience, education, and new coursework to develop a solution or suite of solutions to directly address the originally defined problem. Students will submit their solutions via a proposal. Finalist teams will develop a presentation and then will be flown to the Institute of Transportation Engineers (ITE) 2018 Annual Meeting in Minneapolis to give a live presentation in front of a panel of judges made up of leaders in the ITS and TSMO community.

Please feel free to contact Adam Hopps at ahopps@transportationops.org or phone (202-680-0091) with any questions in advance of submission.

More Info

**The Benjamin H. Stevens 2018 - 2019 Graduate Fellowship in Regional Science
Applications Due February 15, 2018**

Graduate students enrolled in Ph.D. programs in North America are encouraged to apply for the Eighteenth Benjamin H. Stevens Graduate Fellowship in Regional Science, administered by the North American Regional Science Council of the Regional Science Association International (NARSC-RSAI).

The Fellowship consists of a stipend in the amount of \$30,000 (U.S.), paid over a twelve-month period. Applications for the 2018–2019 Fellowship should be sent electronically by the applicant to the Selection Committee Chair, Professor Mario Polèse, mario.polese@ucs.inrs.ca by the deadline of February 15, 2018.

**Applications should be emailed to Professor Mario Polèse at mario.polese@ucs.inrs.ca.
Questions may also be sent to him at mario.polese@ucs.inrs.ca.
For information about the Regional Science Association International (RSAI),
go to www.regionalscience.org.**

More Info About NARSC

**\$5,000 CTF Heckerroth Scholarship
Applications Due Friday, February 16, 2018**

Students who attend a California university or community college, major in Civil Engineering, have a cumulative GPA of at least 3.5 and plan to pursue a career in transportation after graduation are encouraged to apply. The scholarship is competitive and based on the applicant's commitment to a career in transportation, current achievements, and academic record. Eligible applicants are a United States citizen, permanent resident, or documented international student.

**To apply for the CTF Heckerroth Scholarship download the application by clicking [here](#).
Contact CTF at sarah_west@transportationfoundation.org for more information.**

More Info

**Diane Woodend Jones WTS Chair Scholarship
Eno Leadership Development Conference for Emerging Professionals
Applications Due Friday, February 16, 2018
The 2018 conference will be held May 20 - 24, 2018, in Washington, DC**

Thanks to the generosity of Diane Woodend Jones, WTS Chair, one of the 2018 Eno Center for Transportation's Leadership Development attendees will be a WTS member and attend at no cost.

**For more information about the program and past speakers,
please e-mail LDC@enotrans.com.**

Flyer

**2018 Parking Solutions Competition: Garage of the Future
Applications Due February 23, 2018**

The International Parking Institute (IPI) Parking Solutions Competition is a design and development challenge for college students. This competition is a chance for students to express their rendition of The Garage of the Future. IPI seeks to engage students in a challenging parking solutions exercise based on real-world scenarios. Students can submit independently or form their own multidisciplinary teams. Finalists will be selected on the basis of creativity, innovation, realism, applicability, scalability, overall presentation and the idea's ability to benchmark success and demonstrate return on investment.

Notifications and invitations to the four finalists: **March 2018**
Four finalists to IPI's 2018 Conference and Expo: **June 2018**

More Info

**Thomas J. O'Bryant Transportation Policy Fellowship – Summer 2018
Applications Due March 9, 2018**

The Eno Center for Transportation is now accepting applications for its Summer 2018 Thomas J. O'Bryant Transportation Policy Fellowship. This fellowship provides a high-quality professional development opportunity for aspiring transportation specialists. Successful applicants will gain in-depth knowledge of transportation policy and practice

under the guidance of Eno staff.

Duration of the appointment is 10 weeks (start/end dates to be determined by successful candidate and Eno staff)
Fellows are paid a stipend of \$2,000 per month.

**Submit cover letter, resume, and scholarly writing sample (2-3 page selection) by March 9, 2018 to
Alice Grossman at agrossman@enotrans.org. First round interviews will be held in late March.**

More Info

**\$5,000 CTF Graduate School Scholarship
Applications Due April 2, 2018**

Students who are studying a transportation-related field; are currently enrolled as a student in good standing in a California graduate school, or are currently enrolled in an undergraduate institution and have been accepted into a California graduate school; and are a United States citizen, permanent resident, or studying in legal visa status are eligible to apply. The weight of the selection criteria will be: essay (67%); letter of recommendation (11%); undergrad grades (11%); work professional experience, and leadership (11%)

(11/17), undergrad grades (11/17), work, professional experience, and leadership (11/17).

To apply to the CTF Graduate School Scholarship download the application [here](#).

Contact: CTF at sarah_west@transportationfoundation.org for more information.

More Info

23rd National Rural Public and Intercity Bus Conference College and University Rural Public and Intercity Bus Essay Competition Changing Lives, Strengthening Communities Applications Due at 7 pm Pacific Time, April 15, 2018

The 23rd National Conference on Rural and Intercity Bus is scheduled to take place from September 30 to October 3, 2018 in Breckenridge, Colorado. To encourage student participation in the conference, students attending an accredited U.S. community college, four-year college, or university as an undergraduate are offered the opportunity to participate in an essay competition. Two essay winners will receive cash prizes as well as travel funds to attend the conference.

Essay Winners: 1st place \$500 and 2nd place is \$250

Students must attend an accredited U.S. community college, four-year college, or university as an undergraduate.

Flyer

10th National Aviation System Planning Symposium 21st Century Challenges in Aviation System Planning May 20 - 22, 2018 The Lakefront Anchorage, 4800 Spenard Road, Anchorage, Alaska 99517 Call for Posters

The National Aviation System Planning Symposium (NASPS) is a triennial event organized with the goal of assessing the state of the art in system planning, addressing current issues confronting the airport and aviation industry, and identifying research needs to inform the future research agenda for aviation system planning. The symposium brings together system planning consultants, airport and aviation system planners and managers, air carrier and other aviation industry representatives, Federal and state transportation officials, and others interested in the future development of the aviation system and its role in the larger multi-modal transportation system for two days of meetings, presentations, and networking. The NASPS provides a unique opportunity to gather people who are actively involved in planning the aviation system to focus on its future development and improvement for a sustainable, healthy future. The symposium is cosponsored by the Transportation Research Board committees on Aviation System Planning and [Intergovernmental Relations in Aviation](#).

Participation grants are available to provide financial assistance to enable suitably qualified graduate students to attend the 10th National Aviation System Planning Symposium. Learn more about eligibility and other requirements of a [Graduate Student Participation Grant](#) online.

More Info

SURE Program: Summer Research for Undergraduates June 11 - August 3, 2018

Program Benefits:

- Participate in cutting-edge research with top USC faculty
- Receive \$4500 stipend, university housing, and travel to/from Los Angeles
- Gain experience and tools to enhance your application to competitive PhD programs
- Explore the rich and diverse culture of Southern California during a two-month stay in Los Angeles while learning about the resources at USC
- Develop lasting friendships with fellow participants
- Receive an application fee waiver for future graduate study at USC

More Info

ITE Student Membership

The Institute of Transportation Engineers (ITE) is a dynamic, interactive community of more than 17,000 transportation professionals spanning 100+ countries dedicated to today's transportation challenges and solutions.

First Year of ITE Student Membership is FREE!

Sign up as a new ITE Student Member and receive the first year of student membership FREE with benefits that help build your transportation future.

See the flyer for more information.

Flyer

Seeking for Researchers California Policy Lab

California Policy Lab is searching for three, full-time research positions, including a post-doc position in labor economics, one Ph.D. level staff position for homelessness research, and one statistical data analyst. These positions will work on a range of projects with me and with faculty and staff at the California Policy Lab, a new initiative at UCLA and UC Berkeley that supports research partnerships between university academics and California state and local government, focused on the analysis of administrative data. They are described in more detail below.

1) A post doc working directly with me on projects in labor economics based on

- a range of confidential administrative data sets.
- 2) A full-time Ph.D. level Research Director with the California Policy Lab (CPL).
- 3) A third position is for a full-time data analyst.

For more information about the California Policy Lab and to learn more about our current projects, visit: www.capolicylab.org
If interested, email Kelle Taylor at kelletaylor@ucla.edu with resume and cover letter.

Internships & Jobs

Featured Opportunity

Transportation Engineer/Planner Intern with Fehr & Peers LA Office

- Analyze/solve complex transportation planning or engineering problems
- Communicate clearly and concisely, both orally and in writing
- Use software effectively and make timely and informed recommendations
- Work on a variety of projects, which may include traffic operations simulations, bicycle and pedestrian plans, freight and goods movement planning, traffic impact studies, travel demand modeling, transit planning, and regional transportation plans
- **Apply by sending resume and cover letter to jobs@ourbus.com**



Featured Opportunity

University Travel Intern with OurBus New York Office

- Identify travel needs at your university for breaks, airport shuttles, weekend services, charters etc.
- Involvement in all phases of planning, research, outreach, and marketing for pop-up spring break bus routes
 - Coordinate with charter bus partners
 - Responsible for outreach to government and university stakeholders
- Lead promotion and marketing efforts, with assistance from our sales and marketing team
 - Develop and run discounts and promotions to engage users
 - Miscellaneous projects as needed
- pay at \$16/hour plus performance bonuses based on ticket sales on the bus routes that you set up.
- **Apply [here](#)**



Job Title	Agency/Firm	Deadline
Administrative Intern - Transit Division	City of Redondo Beach	30-Jan
	Redondo Beach, CA	
Associate Planner	City of Beverly Hills	30-Jan
	Beverly Hills, CA	
Project Associate	MIG	2-Feb
	Berkeley, CA	
Internship Opportunity	City of Santa Monica	9-Feb
	Santa Monica, CA	
Student Intern Program (Summer 2018)	City and County of San Francisco	14-Feb
	San Francisco, CA	
2018 Gerhardt Internship	100 Friends of Oregon	15-Feb
	Portland, OR	
Program Manager – Transportation Planning	Ventura County Transportation Commission	18-Feb
	Ventura, CA	
Metro First/Last Mile Internship Opportunity	LA Metro	23-Feb
	Los Angeles, CA	
Transportation Engineer/Planner Intern	Fehr & Peers	23-Feb
	Los Angeles, CA	
Internships with the Science and Technology Innovation Program	Wilson Center	15-Mar
	Washington, DC	
THOMAS J. O'BRYANT Transportation Policy Fellowship – SUMMER 2018	Eno Center for Transportation	
	Washington, DC	
Part Time Field Data Collector (#11341)	TranSystems	
	Los Angeles, CA	
Assistant Transportation Engineer/Planner	W-Trans	
	Santa Rosa or Oakland, CA	
Senior Planner	Sonoma-Marin Area Rail Transit (SMART)	
	Petaluma, CA	

<u>Transit Manager</u>	City of Union City	
	Union City, CA	
<u>Transportation Project Manager/Planner</u>	PTS Staffing Solutions	
	Los Angeles, CA	
<u>Senior Transportation Project Manager (#180097)</u>	Michael Baker International	
	Los Angeles, CA	
<u>Transportation/Traffic Engineer (#18-0067)</u>	Kimley-Horn	
	Los Angeles, CA	
<u>Sr. Transportation Project Manager (#2000000431)</u>	Tetra Tech	
	Los Angeles, CA	
<u>Associate Planner</u>	City of Ojai	
	Ojai, CA	
<u>Ocean Freight Business Development Director</u>	CEVA Logistics	
	Torrance, CA	
<u>Associate Engineer - Traffic/Transportation (CIP)</u>	County of Napa	
	Napa, CA	
<u>GIS Intern</u>	Culver City	
	Culver City, CA	
<u>Project Engineer – Transportation</u>	Psomas	
	Los Angeles, CA	
<u>Transportation Project Manager/Planner</u>	PTS Staffing Solutions	
	Los Angeles, CA	
<u>Resident Engineer- (Transportation/Roadway Projects)</u>	Civil Engineering & Construction Management Firm	
	Los Angeles, CA	
<u>Controls Engineer/Principal</u>	AeroVironment, Inc.	
	Simi Valley, CA	
<u>Traffic Engineer</u>	The Mobility Group	
	Irvine, CA	
<u>Intern Project Manager</u>	Community Corporation of Santa Monica	
	Santa Monica, CA	
<u>Environmental Planning Intern</u>	Parsons Corporation	
	Pasadena, CA	
<u>Department of Innovation & Digital Media Industry Cluster Development-Internship</u>	LAEDC	
	Los Angeles, CA	
<u>GIS Developer (#33925)</u>	WSP USA	
	Sacramento, CA	
<u>Strategic Planning Manager - Train Operations and Transportation (#34072)</u>	WSP USA	
	Sacramento, CA	
<u>Transportation Planner II</u>	AECOM	
	Los Angeles, CA	
<u>Entry Level Transportation Engineer</u>	AECOM	
	Los Angeles, CA	
<u>Engineer/Planner - Entry/Level</u>	Fehr & Peers	
	Any Office	
<u>Multiple Openings</u>	DKS Associates	
	CA, OR, WA	
<u>US Planning Director</u>	Kounkuey Design Initiative (KDI)	
	Los Angeles, CA	
<u>Practice Leader, Transportation Planning (#LOS00006X)</u>	ARUP	
	Los Angeles, CA	
<u>Complete Street Designer/Active Transportation Planner (#USPL15)</u>	Steer Davies Gleave	
	Los Angeles, CA	
<u>Graduate Interns</u>	SGVCOG	
	Alhambra, CA	
<u>Transportation Associate I</u>	ELTP program at LA Metro	
	Los Angeles, CA	
<u>Assistant Transportation Engineer (Entry Level)</u>	WKE	
	Santa Ana, CA	
<u>Mid-Level Traffic Project Engineer</u>	LIN Consulting, Inc.	
	Irvine, CA	

Transportation Engineer II-UPS Freight	UPS	
	Dearborn, MI	
Administrative Intern - Planning Division (#17-009)	City of Manhattan Beach	
	Manhattan Beach, CA	
Associate Planner (#062217)	City of Palmdale	
	Palmdale, CA	
Designing an Innovative Transportation System for Groundbreaking Projects	FUSE Fellowship	
	San Jose, CA	
Planner (Comprehensive)	Dyett & Bhatia, Urban and Regional Planners	
	San Francisco, CA	
Associate Transportation Planner	Caltrans	
	Sacramento, CA	
City Transportation Engineer (#04516)	City of Hampton	
	Hampton, VA	

METRANS Student Newsletter Staff

Rae Rui Zhang | Publisher, Editor in Chief | zhan305@usc.edu
Eric Tunell | Lead Editor | tunell@usc.edu
Prithvi Deore | Assistant Editor | pdeore@usc.edu
Hue-Tam Jamme | Research Editor | jamme@usc.edu
Ellie Yilin Zhang | Career Opportunities Editor | zhangyil@usc.edu

METRANS Associates

Major Funders



Gold Partner



Port of
LONG BEACH
The Green Port

Silver Partners



Bronze Partners





Partners



CALIFORNIA STATE UNIVERSITY
LONG BEACH



UCLA



UCI University of
California, Irvine



**Pima
Community
College**



Twitter



Facebook



METRANS Transportation Center

Copyright © 2018 METRANS Transportation Center, All rights reserved.

Our mailing address is:
METRANS Transportation Center
University of Southern California
650 Childs Way, RGL 107
Los Angeles, CA 90089-0626

Want to change how you receive these emails?
You can [update your preferences](#) or [unsubscribe from this list](#)