



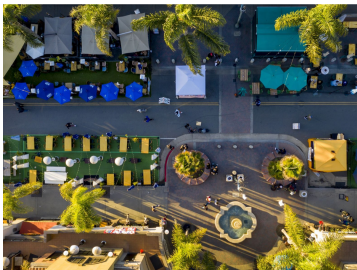
## ***METRANS on the Move:*** **our weekly newsletter by students**

Hi Readers, METRANS wishes you a happy 2022!



### ***In the News***

The articles in this newsletter are prepared or accomplished by others in their personal capacity. The opinions expressed are the author's own and do not necessarily reflect the views of METRANS or its partners.



#### **What the Pandemic's 'Open Streets' Really Revealed**

Covid-inspired traffic restrictions and street changes have swept scores of U.S. cities since the start of the pandemic. But not all communities have welcomed them.

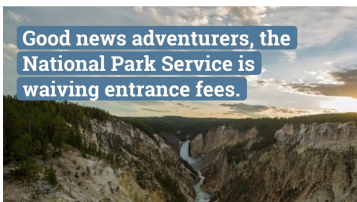
Read the Bloomberg CityLab feature [here](#).



#### **Transit-worker scarcity hits cities**

Labor shortages are plaguing public transportation systems in nearly every big city, disrupting one of the critical support systems of modern urban life and complicating the recovery of an industry that has struggled mightily during the pandemic.

Read the Arkansas Democrat feature [here](#).



#### **Enjoy 5 Days of Free Admission to America's National Parks in 2022**

The National Park Service (NPS) is waiving entrance fees at park sites across the country on five days in 2022.

Read the Southern Living feature [here](#).



## Public Transit Systems Refocus on Their Core Riders

In the wake of the pandemic, officials are shifting bus and rail service toward lower-income neighborhoods, while some agencies are eliminating fares.

Read the WIRED feature [here](#).



## Here are six ride-hailing companies in Austin that aren't Uber or Lyft

Uber and Lyft dominate the rides-on-demand industry, but Austin has emerged as a battleground where lesser-known companies are fighting against the global juggernauts for a slice of the business.

Read the KUT90.5 feature [here](#).

# Webinars & Online Events

## 2022 TRB Annual Meeting

**January 9th-12th (in-person), hosted by TRB**

Expected to attract thousands of transportation professionals from around the world, the meeting program covers all transportation modes, and addresses topics of interest to policy makers . . .

[More Info](#)

## WEBINAR: What Does A Rollout Of Fuel Cell Electric Cars Look Like For Oregon And Washington?

**Wednesday, January 12th at 1:00 pm PST (virtual), hosted by Mindful Mobility Tech Talks**

As California and British Columbia roll out cars and hydrogen stations, how can OR and WA take advantage of the lessons learned and cost reductions from these efforts?

[More Info](#)

## WEBINAR: LUSKIN SUMMIT 2022: RESEARCH IN ACTION

**Wednesday, January 19th at 9:00 am PST (virtual), hosted by UCLA Luskin**

An annual convening of elected officials, scholars, and civic and business leaders, the Luskin Summit is a research-informed, cross-sector conversation on the major public policy issues facing California. This year's theme will be "Research in Action."

[More Info](#)

## WEBINAR: TRAINS, BUSES, PEOPLE: AN OPINIONATED ATLAS OF US AND CANADIAN TRANSIT

**Wednesday, January 19th at 12:00 pm PST/3:00 pm EST (virtual), hosted by Eno Center for Transportation**

Christof Spieler will discuss the evolving conversation around transit in the past three years since the book originally published. He'll also briefly cover updates around fare policies, wayfinding, transit governance structures, customer experience, how to create inclusive transit systems that work for all riders.

[More Info](#)

## WEBINAR: Aviation and Climate Change Forum

Thursday, January 20th at 10:00 am PST, hosted by Saint Jose State University

Aviation's impact on climate change is significant, and without mitigation, this impact is expected to grow as the industry recovers from the global pandemic. Climate change has a corresponding, large impact on aviation; changing weather patterns can affect aircraft performance, infrastructure, and operations.

[More Info](#)

## WEBINAR: Building a MVC injury system of linked data: Lessons learned & questions answered about pedestrian injuries

Wednesday, January 26th at 11:30 am PST/2:30 pm EST, hosted by CSCRS

The free online seminar will examine how linking motor vehicle crash (MVC) and healthcare data has the potential to generate a more comprehensive understanding of MVC injuries.

[More Info](#)

## WEBINAR: Fuel Cell Electric Trucks In The Pacific Northwest

Wednesday, January 26th at 1:00 pm PST, hosted by Mindful Mobility Tech Talks

What actions and policies from government and private industry are needed to drive the rollout of trucks and heavy-duty hydrogen stations?

[More Info](#)

## SAVE THE DATE! PSR Emerging Scholars Transportation Research Symposium

Thursday & Friday, March 3rd & 4th, hosted by the Pacific Southwest Region University Transportation Center (PSR)

[More Info](#)

## *Fast Facts*

*Created for Students, by Students*

## Automation, Electrification, and Shared Mobility in Freight

**Author:** Miguel Jaller,  
University of California, Davis

**Year:** 2020

**Keywords:** automation, electric vehicles,  
freight, supply chain, goods movement



Check this week's featured Fast Facts [here](#).  
Looking for more Fast Facts? Check out the Fast Facts Page on [metrans.org](http://metrans.org)!

[Take me to Fast Facts](#)

## *Pathways to Opportunity*

### **Summer Intern Port Authority**

Apply by 02/01/2022

[See more info](#)

### **Craig Roberts Fellowship AZTrans**

Apply by 03/01/2022

[See more info](#)

[More Internships and Scholarships Here](#)

### **Transportation Planner II Fairfax County**

Apply by 01/14/2022

[See more info](#)

### **Program Administrator Department of For-Hire Vehicles**

Apply ASAP

[See more info](#)

[More Job Opportunities Here](#)

## *Newsletter Staff*

Hong-Sheng "Clark" Hsu • *Newsletter Lead* • [hsuh@usc.edu](mailto:hsuh@usc.edu)  
Anderson Meger • *News Data Analyst* • [meger@usc.edu](mailto:meger@usc.edu)  
Emily Ng • *Opportunities Editor* • [emng@usc.edu](mailto:emng@usc.edu)  
Christopher Keating • *Fast Facts Editor* • [cckeatin@usc.edu](mailto:cckeatin@usc.edu)  
Hayley Rundle • *Staff Writer* • [hrundle@usc.edu](mailto:hrundle@usc.edu)  
Dr. Victoria Deguzman • *Advisor* • [victoriv@price.usc.edu](mailto:victoriv@price.usc.edu)

## *METRANS Associates*



Major Funders



Associate Partners



Academic Partners



---

Copyright © 2022 METTRANS Transportation Consortium, All rights reserved.

New users and interested parties: [subscribe here](#).

Want to change how you receive these emails?  
You can [update your preferences](#) or [unsubscribe from this list](#).