



METRANS on the Move: our weekly newsletter by students



In the News

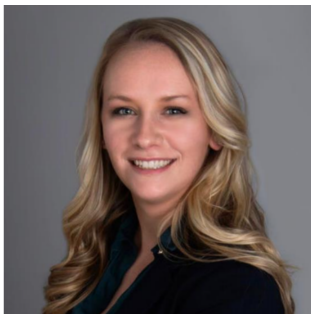
The articles in this newsletter are prepared or accomplished by others in their personal capacity. The opinions expressed are the author's own and do not necessarily reflect the views of METRANS or its partners.



Meet METRANS K12 Lead, Namitha Nixon

Namitha Nixon is a sophomore from Portland, Oregon pursuing a Business of Cinematic Arts (BCA) degree at USC. Ever since she was little, she was infatuated with the magic behind how movies are made. She would watch behind-the-scenes clips trying to understand everything about how films were produced. Nixon was drawn to USC by the unique BCA program at its Cinematic School of the Arts, one of the oldest and most prestigious film schools in the world.

Read more [here](#).



PSR ITE Student Chapters Collaborate to Bring Transportation Professionals to Campus

We are pleased to announce a new collaboration between two Pacific Southwest Region University Transportation Center (PSR) member chapters of the Institute of Transportation Engineers, - Northern Arizona University (NAU) and the University of Southern California (USC).

Read more [here](#).



Inflation, production backlogs hit electric transit bus manufacturer Proterra

As demand grows for electric buses, cities and transit agencies will face production delays and rising costs. "The manufacturing environment is very challenging right now," said Proterra's chief executive officer, Gareth Joyce, on the earnings call. Proterra Transit had a backlog of \$450 million worth of orders at the end of last year.

Read the SMARTCITIESDIVE feature [here.](#)



London Pushes its Ultra-Low Emission Zone to City Limits

Next year, anyone who wants to drive a more-polluting older vehicle anywhere in Greater London will have to pay a 12.50 pound (\$16.70) daily charge to do it.

Read the Bloomberg CityLab feature [here.](#)

Webinars & Online Events

Webinar: Effects of Bike Lending on Commuting to Work: The Google Case Study Wednesday, March 9th at 10:00 am PST, hosted by SJSU

How are tech giant employees returning to work? Maybe by bike.

Google employees borrowed high quality electric-assisted and conventional bicycles for free, for up to six months. MTI researchers discuss their recent evaluation of this transportation demand management program in this webinar.

[More Info](#)

Webinar: The Emerging Future of Supply Chains

Wednesday, March 9th at 11:00 am PST/2:00 pm EST, hosted by Eno Center for Transportation

Many of the goods imported into the U.S. rely on intricate, finely-tuned, international supply chains. When the COVID-19 pandemic wreaked havoc on international supply networks that caused shortages, price increases, and instilled plenty of worry in consumers, it also set in motion more conversation about the emerging future of supply chains. But how did we get here? In this webinar, participants will learn more about the past, present, and future of supply chains and freight systems, including how supply chains have changed over time, evolving types of freight providers, autonomous freight advancements, and public policy changes. The presentation, which is also the TRB 2022 Deen Lecture, will be led by Anne Strauss-Wieder and discussion will be facilitated by Lillian Borrone.

[More Info](#)

METRANS EVENT: Research Seminar Series: Performative or Authentic? Assessing the Status of Transportation Equity Work in California

Wednesday, March 9th at 12:00 pm PST (virtual), hosted by METRANS

This report assesses equity work within transportation in California by analyzing the expert perspectives of transportation professionals who also identify as Black or people of color. Key findings centered around a key distinction between "performative" equity work and "authentic" equity work. Key recommendations include supporting action-oriented equity work, especially around resource allocation and redistribution of decision-making power to communities. The report includes case studies of how to apply findings to new mobilities and policing, as well as visions for more equitable transportation futures.

[More Info](#)

Webinar: The Cities We Need: Seven Equitable Urban Transformation

Thursday, March 10th at 6:00 am PST/9:00 EST, hosted by UrbanShift

Join UrbanShift for our first webinar of 2022 as we examine the findings of the World Resources Report, "Towards a More Equal City." The report describes seven equity- and sustainability-driven transformations that can improve access to core urban services and create enduring change in cities worldwide. We will hear from WRI Ross Center experts about these transformations while a former city official from Bogotá, Colombia will share their experiences in municipal finance and offer recommendations that can be adopted in other cities.

[More Info](#)

Webinar: Digitizing the Curb: An Efficient Path to Better Curbside Management

Thursday, March 10th at 10:00 am PST, hosted by CurblQ

Curbside data is critical to facilitate curb management tools, like dynamic curb regulations and pricing, which allow for greater mobility and access for people and businesses on our streets. However, collecting curbside information at scale is often a barrier to practicing digital curb management.

[More Info](#)

Webinar: The Impact of Data Science on Freight Transportation Procurement

Friday, March 11th at 9:00 am PST/12:00 pm EST , hosted by MIT Mobility Initiative

Truckload transportation procurement has been a hot bed of both academic research and practitioner driven innovation for several decades. Based on this earlier work, the current dominant form of procurement has been to use Mixed Integer Linear Programming optimization models to create a strategic assignment that is then fed into an operational routing guide for execution. The recent market volatility combined with the emergence of new methodologies has made this dominant design obsolete. In this talk, we will discuss how shippers, carriers, and brokers are leveraging advances in data science to revolutionize how they work with each other. The talk will cover examples from practice and research of the use of segmentation, visualization, modeling, advanced contracting, and portfolio management as well as laying out potential future areas of research.

[More Info](#)

Webinar: C²M² Distinguished Speaker Series Presents

Friday, March 11th at 1:00 pm PST/4:00 pm EST , hosted by C²M²

US highway system is considered one of the critical infrastructures in the history of transportation in this country. We all use them! We all enjoy the goods and services delivered to us through them. Our cities and towns are interconnected by them. It is almost impossible to imagine our lives without the vast network of interstates that spatially connect us to one another in today's world. However, there were and still are social and economic costs to these enormous networks of roads. This talk will discuss some of those spatial disparities that are disproportionately burdened by minorities.

[More Info](#)

***METRANS EVENT:* Journey to Space Day - A Free Event as part of the USC Alumni Day of Service**

Saturday, March 12th at 10:00 am PST at CA Science Center, hosted by USC Alumni Association and METRANS

Learn about careers from a JPL Nasa Engineer, have lunch, tour the CA Science Center, and view a 3D IMAX Movie!

[More Info](#)

Webinar: Building Bridges of Trust: An Approach to Cultural Transformation

Thursday, March 17th at 9:00 am PDT/12:00 pm EDT, hosted by DRPA/PATCO

The Delaware River Port Authority (DRPA/PATCO) was engaged in several large, mission-critical projects at a time when morale and trust, both internally and among external stakeholders, were low. They turned to lessons based on the principles of comedy improvisation, such as deep listening, empathy, and collaborative trust.

[More Info](#)

PSR UTC Congress 2022: Lessons Learned in Vulnerability, Resilience and Recovery

Monday, March 21st to 23rd in Honolulu, hosted by PSR

Curbside data is critical to facilitate curb management tools, like dynamic curb regulations and pricing, which allow for greater mobility and access for people and businesses on our streets. However, collecting curbside information at scale is often a barrier to practicing digital curb management.

[More Info](#)

Webinar: Policy & Popcorn: Opportunities and Obstacles for Engaging with Legislative Process

Tuesday, March 22nd at 2:30 pm PDT, hosted by UC Davis

Join us March 22nd for an overview of the legislative process and how to engage with the legislature throughout the year. Topics discussed will include effective collaboration tactics and specific examples of when scientists have successfully engaged in the policy process. Presentations will be followed by Q&A, so please come prepared with questions for our speakers!

[More Info](#)

Webinar: A Hands-On Exploration of the Bay Area Parking Census

Tuesday, March 29th at 12:30 pm PDT, hosted by MINETA

The Mineta Transportation Institute, in partnership with SPUR and researchers at Arizona State University, recently created a parking census of the Bay Area has revealed the true enormity of land that we dedicate to our cars: 15 million spaces spread across the region's nine counties. To coincide with the launch of this census we're also releasing the database that was used as the backbone for our research. This innovative, publicly-available tool can serve as an important asset to help policymakers and planners throughout the Bay Area make more strategic decisions about parking. But such a tool is only useful if you know what to do with it. Take part in an interactive workshop to learn how this data-rich index of the region's parking surfeit can be wielded to inform policy changes, both big and small, in your own city.

[More Info](#)

Proposals for "Green Transportation Summit & Expo 2022"

Due on March 31st

The Green Transportation Summit & Expo (GTSE) is the West Coast's premier fleet modernization and sustainable transportation event. GTSE offers attendees an inside look at the latest in fleet technologies and innovation and provides informative sessions featuring a who's who of national and regional transportation leaders.

[More Info](#)

2022 CCAT Student Poster Competition Submissions Open

Due on March 31st

The Center for Connected and Automated Transportation (CCAT) is pleased to announce that submissions are open for the 5th annual Student Poster Competition at the 2022 Global Symposium. This event is co-sponsored by the Intelligent Transportation Society of Michigan and invites all undergraduate/graduate students from U.S.-based institutions to participate.

[More Info](#)

31st Annual UCLA Lake Arrowhead Symposium: Transit in Transition

Friday, April 1st at 8:30 am PDT (in-person), hosted by UCLA Institute of Transportation Studies

Over the course of the 2021 Lake Arrowhead Symposium, we assessed the state of public transit in a time of intense uncertainty. We explored the pandemic's impact on operations, examined the post-bailout financial landscape, discussed ongoing equity issues, and hosted a roundtable with federal officials, who relayed the Biden administration's plans for resuscitating public transit. We closed with a look into the future: will transit ever resemble its prior self? And is a return to "normal" even preferable — or is there something to be gained from an alternate path?

As with previous events, we will be able to offer a limited number of scholarships for individuals to attend this daylong event free of charge. Interested individuals should join the waitlist. We will be notifying respondents on March 11 and March 28. Please click [here](#) to join the waitlist.

[More Info](#)

METRANS EVENT: PSR Research Seminar Series: Mobility, Accessibility and Disadvantaged Neighborhoods

Wednesday, April 6th at 12:00 pm PDT (hybrid), hosted by METRANS

This project examines commonalities and differences among disadvantaged neighborhoods in mobility and access to opportunities, based on the concept of spatial-transportation mismatch (STM), which

asserts that spatial distance and poor transportation are potential barriers to opportunities beyond one's immediate location. The project analyzes variations in transportation resources and accessibility to employment, quality elementary schools, and health care. The study compares two regions in California, one highly urbanized (Los Angeles County) and one more agriculture based (San Joaquin County). This allows us to compare disadvantaged neighborhoods with non-disadvantaged neighborhoods within each region, and to compare disadvantaged neighborhoods in one county versus another.

[More Info](#)

SAVE THE DATE! METRANS/ASPD State of Planning 2022

Thursday, April 7th at 12:30 pm PDT (virtual), hosted by METRANS

Speaker:

Michael Cano (USC MPA Alumni), Deputy Executive Director, Goods Movement and State Policy Programming, LA Metro

Helen Campbell, AICP, Senior Planner, California Governor's Office of Planning and Research

Sarah Jepson, Planning Director, SCAG

Shannon Wages (USC MPL Alumni), Principal Planer, Environmental Science Associates

Research Submission for low carbon, cost-free, COVID-free Bridging Transportation Researchers conference (August 4&5)

Due on April 15th

All manuscripts should be written in English and, for the purpose of double-blind review, should exclude any information revealing the names or affiliations of the authors. The submissions process will be managed via EasyChair. BTR does not have proceedings, and submitting your work to BTR does not prevent you from submitting it to journals. You can also submit your recent published work for presentation at BTR.

[More Info](#)

2022 ITS California Annual Conference & Exhibition

May 16th to 18th at Hyatt Regency San Francisco Airport, hosted by ITS California

Please check the Membership list to see if your organization is an ITS California Member to use the Membership discount.

[More Info](#)

Pathways to Opportunity

Student Professional Worker LADOT

Apply by 03/11/2022

[See more info](#)

Long Range Planning Intern City of West Hollywood

Apply ASAP

[See more info](#)

[More Internships and Scholarships Here](#)

Transportation Engineering Associate LADOT

Apply ASAP

[See more info](#)

Sustainable Freight Research Analyst UC Davis

Apply ASAP

[See more info](#)

[More Job Opportunities Here](#)

Newsletter Staff

Hong-Sheng "Clark" Hsu • *Newsletter Lead* • hsuh@usc.edu
Emily Ng • *Opportunities Editor* • emng@usc.edu
Christopher Keating • *Fast Facts Editor* • cckeatin@usc.edu
Hayley Rundle • *Staff Writer* • hrundle@usc.edu
Jacob Wong • *Staff Writer* • wongjaco@usc.edu
Dr. Victoria Deguzman • *Advisor* • victoriv@price.usc.edu

METRANS Associates

Major Funders



Associate Partners



Academic Partners



Copyright © 2022 METRANS Transportation Consortium, All rights reserved.

New users and interested parties: [subscribe here](#).

Want to change how you receive these emails?
You can [update your preferences](#) or [unsubscribe from this list](#).