



## METRANS on the Move: our weekly newsletter by students



### In the News

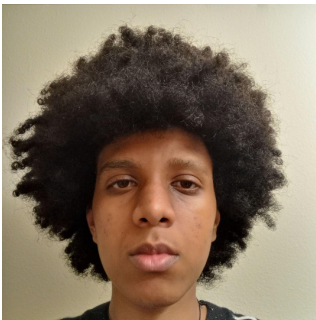
The articles in this newsletter are prepared or accomplished by others in their personal capacity. The opinions expressed are the author's own and do not necessarily reflect the views of METRANS or its partners.



#### Meet METRANS Student Team Member Timothy Labounko

Timothy Labounko is a METRANS student assistant, serving as a member of the Research Team, Strategy Team, and Newsletter Team, and is a second-year undergraduate student at USC majoring in Urban Studies/Planning with a minor in Spatial Studies and Computer Programming.

Read more [here](#).

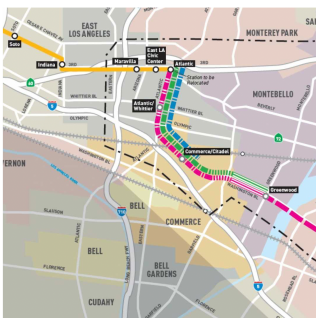


#### A Chat with METRANS Student Assistant, Aaron Abunu

##### What is your major, year, and role at METRANS?

I am a third-year student in architecture and joined the METRANS FAST Facts research team last semester in the fall. I love reading about research, and this gives me a better reason now to read more about it!

Read more [here](#).



#### Metro considers building Gold Line Eastside extension in phases

Two years ago, citing feasibility challenges, Metro dropped plans for a two-pronged extension of the Eastside Gold (L) Line, focusing its efforts on a sole alignment running toward the City of Whittier. Now, a staff report indicates that in the wake of rising construction costs, the extension may now be split into phases.

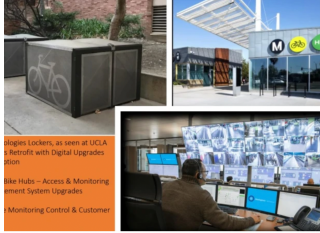
Read the URBANIZE LA feature [here](#).



## Driving Through Paris? That's Going to Get a Lot Tougher in 2024

Most drivers looking to traverse a big city try to figure out the shortest and quickest route. In Paris, that's going to get a lot trickier.

Read the Bloomberg CityLab feature [here](#).



## Committee Approves Metro Station Bike Parking Contract

This morning, the Metro Planning and Programming Committee approved modernizing and expanding bicycle parking at transit stations.

Read the STREETS BLOG LA feature [here](#).

## Webinars & Online Events

### **METRANS EVENT: Toastmasters Open House!**

**Wednesday, February 23rd at 11:00 am PST (virtual), hosted by METRANS**

We will be holding a virtual open house highlighting the benefits of the club and Toastmasters Pathway Program.

USC METRANS Toastmasters club is a welcoming space for anyone that wants to feel more comfortable with public speaking and doesn't know where to start. Toastmasters International has succeeded in training millions of people through its learn-by-doing method of public speaking and peer feedback. During our meetings you'll have opportunities to practice public speaking on a variety of topics with a transportation theme in a group setting, as well as prepare and present individual speeches.

[More Info](#)

### **Transportation Research Forum Virtual Networking "Discussion over Drinks"**

**Thursday, February 24th at 2:00 pm PST/12:00 pm HST, hosted by NDPTC**

The December 2021 tornado outbreak caused multiple fatalities and casualties. Over 50 tornadoes were reported, along with wind and hail, across several states. Emergency declarations were issued in Kentucky, Tennessee, and Arkansas. Please join the event for a special Third Thursday panel discussion on preparedness, response, and recovery for the December 2021 tornado outbreak.

### **NDPTC's Virtual 3rd Thursday Event - December 2021 Tornado Outbreak: Preparedness, Response, and Recovery Efforts**

**Thursday, February 24th at 2:00 pm PST/12:00 pm HST, hosted by NDPTC**

The December 2021 tornado outbreak caused multiple fatalities and casualties. Over 50 tornadoes were reported, along with wind and hail, across several states. Emergency declarations were issued in Kentucky, Tennessee, and Arkansas. Please join the event for a special Third Thursday panel discussion on preparedness, response, and recovery for the December 2021 tornado outbreak.

[More Info](#)

### **METRANS EVENT: Field Trip to Foothill Transit**

**Friday, February 25th at 10:00 am to 2:00 pm PST, pick up and drop off on USC main campus**

[More Info](#)

### **ITS Davis Webinar: What Does Sustainable Freight Look Like for Caltrans?**

**Friday, February 25th at 1:40 pm PST (hybrid), hosted by UC Davis**

There have been numerous regulations, laws, and policies passed in the last few years that are moving

California to a more sustainable freight system. Among these is a carbon-neutral state with 100% zero-emission trucks by 2045. Learn how a large state department of transportation has navigated and embraced these new challenges, what Caltrans can do to help California achieve a more sustainable freight ecosystem, and what questions Caltrans still needs help answering in determining its most efficient path to this sustainable future.

[More Info](#)

---

### **Webinar: Electric Vehicle Charging Networks: Strategies, Data, and Models for States**

**Tuesday, March 1st at 11:00 am PST/2:00 pm EST, hosted by Eno Center for Transportation**

In this webinar, researchers from Texas A&M Texas Transportation Institute and its spin-off EV charging analytics company, ElectroTempo, will discuss the policy implications of the IIJA for how states can and should be planning for an electric future. They will give examples of stakeholder coordination efforts, funding mechanisms, and the critical need to harness predictive analytics to optimize charging infrastructure investments.

[More Info](#)

---

### **Webinar: Transportation, Inflation, and the Supply Chain**

**Tuesday, March 2nd at 11:00 am PST/2:00 pm EST, hosted by REMI**

The temporary Ambassador Bridge closure shows that supply-chain disruptions may continue to dodge the economy in 2022. We discuss the link between transportation, the supply chain, and the economy. Component shortages have led to adverse supply shocks in the automotive and other industries; labor shortages in trucking and other sectors have increased production costs, and geopolitical events have pushed the price of crude oil to multi-year highs.

[More Info](#)

---

### ***SAVE THE DATE!* PSR Emerging Scholars Transportation Research Symposium**

**Friday, March 4th at 8:30 am PST (hybrid), hosted by the Pacific Southwest Region University Transportation Center (PSR)**

Join us for presentations from both academics and emerging scholars from our PSR partner universities, including USC, UCLA, the University of Hawai'i at Mānoa, UC Davis, and others. The event will take place from 8:30 am to 4 pm. The event will be hosted both in-person at RGL 308 on USC's campus and on zoom from 8:30 am to 4 pm on March 4th, 2022. Lunch will be served.

[More Info](#)

---

### **PSR Webinar: Bike Share in the Sacramento Region: Lessons Learned and What's Next**

**Friday, March 4th at 1:40 pm PST (hybrid), hosted by UC Davis**

Join us for this ITS-Davis Seminar where you'll hear from Sabrina Bradbury, SACOG Senior Program Manager, about the latest on the region's bike share program and efforts to attract and manage both bike share and scooter share in communities around the region.

[More Info](#)

---

### ***METRANS EVENT:* Research Seminar Series: Performative or Authentic? Assessing the Status of Transportation Equity Work in California**

**Wednesday, March 9th at 12:00 pm PST (hybrid), hosted by METRANS**

This report assesses equity work within transportation in California by analyzing the expert perspectives of transportation professionals who also identify as Black or people of color. Key findings centered around a key distinction between "performative" equity work and "authentic" equity work. Key recommendations include supporting action-oriented equity work, especially around resource allocation and redistribution of decision-making power to communities. The report includes case studies of how to apply findings to new mobilities and policing, as well as visions for more equitable transportation futures.

[More Info](#)

---

## Proposals for "Green Transportation Summit & Expo 2022"

**Due on March 31st**

The Green Transportation Summit & Expo (GTSE) is the West Coast's premier fleet modernization and sustainable transportation event. GTSE offers attendees an inside look at the latest in fleet technologies and innovation and provides informative sessions featuring a who's who of national and regional transportation leaders.

[More Info](#)

---

## 2022 CCAT Student Poster Competition Submissions Open

**Due on March 31st**

The Center for Connected and Automated Transportation (CCAT) is pleased to announce that submissions are open for the 5th annual Student Poster Competition at the 2022 Global Symposium. This event is co-sponsored by the Intelligent Transportation Society of Michigan and invites all undergraduate/graduate students from U.S.-based institutions to participate.

[More Info](#)

---

## 31st Annual UCLA Lake Arrowhead Symposium: Transit in Transition

**Friday, April 1st at 8:30 am PST (in-person), hosted by UCLA Institute of Transportation Studies**

Over the course of the 2021 Lake Arrowhead Symposium, we assessed the state of public transit in a time of intense uncertainty. We explored the pandemic's impact on operations, examined the post-bailout financial landscape, discussed ongoing equity issues, and hosted a roundtable with federal officials, who relayed the Biden administration's plans for resuscitating public transit. We closed with a look into the future: will transit ever resemble its prior self? And is a return to "normal" even preferable — or is there something to be gained from an alternate path?

As with previous events, we will be able to offer a limited number of scholarships for individuals to attend this daylong event free of charge. Interested individuals should join the waitlist. We will be notifying respondents on March 11 and March 28. Please click [here](#) to join the waitlist.

[More Info](#)

---

## **SAVE THE DATE!** METRANS Prof Dev/Industry panel event: State of Planning Roundtable

**Tuesday, April 5th (hybrid)**

---

## **SAVE THE DATE!** METRANS/PSR Research Seminar Series: Mobility, Accessibility and Disadvantaged Neighborhoods

**Wednesday, April 6th at 12:00 pm PST (hybrid), hosted by METRANS**

This project examines commonalities and differences among disadvantaged neighborhoods in mobility and access to opportunities, based on the concept of spatial-transportation mismatch (STM), which asserts that spatial distance and poor transportation are potential barriers to opportunities beyond one's immediate location. The project analyzes variations in transportation resources and accessibility to employment, quality elementary schools, and health care. The study compares two regions in California, one highly urbanized (Los Angeles County) and one more agriculture based (San Joaquin County). This allows us to compare disadvantaged neighborhoods with non-disadvantaged neighborhoods within each region, and to compare disadvantaged neighborhoods in one county versus another.

---

## **Research Submission for low carbon, cost-free, COVID-free Bridging Transportation Researchers conference (August 4&5)**

**Due on April 15th**

All manuscripts should be written in English and, for the purpose of double-blind review, should exclude any information revealing the names or affiliations of the authors. The submissions process will be managed via EasyChair. BTR does not have proceedings, and submitting your work to BTR does not prevent you from submitting it to journals. You can also submit your recent published work for presentation at BTR.

[More Info](#)

---

## *Pathways to Opportunity*

### **Facilities Student Intern**

#### **Foothill Transit**

Apply ASAP

[See more info](#)

### **Craig Roberts Fellowship**

#### **AZTrans**

Apply by 03/01/2022

[See more info](#)

[More Internships and Scholarships Here](#)

### **Postdoctoral Scholar**

#### **UC Riverside**

Apply ASAP

[See more info](#)

### **Transportation Analyst**

#### **OCTA**

Apply by 04/03/2022

[See more info](#)

[More Job Opportunities Here](#)

## *Newsletter Staff*

Hong-Sheng "Clark" Hsu • *Newsletter Lead* • [hsuh@usc.edu](mailto:hsuh@usc.edu)

Anderson Meger • *News Data Analyst* • [meger@usc.edu](mailto:meger@usc.edu)

Emily Ng • *Opportunities Editor* • [emng@usc.edu](mailto:emng@usc.edu)

Christopher Keating • *Fast Facts Editor* • [cckeatin@usc.edu](mailto:cckeatin@usc.edu)

Hayley Rundle • *Staff Writer* • [hrundle@usc.edu](mailto:hrundle@usc.edu)

Jacob Wong • *Staff Writer* • [wongjaco@usc.edu](mailto:wongjaco@usc.edu)

Dr. Victoria Deguzman • *Advisor* • [victoriv@price.usc.edu](mailto:victoriv@price.usc.edu)

## *METRANS Associates*

### Major Funders



### Associate Partners



### Academic Partners



Copyright © 2022 METTRANS Transportation Consortium, All rights reserved.

New users and interested parties: [subscribe here](#).

Want to change how you receive these emails?  
You can [update your preferences](#) or [unsubscribe from this list](#).