



## METRANS on the Move: our weekly newsletter by students

Happy Thursday eve, everyone. It's almost the weekend!



### In the News

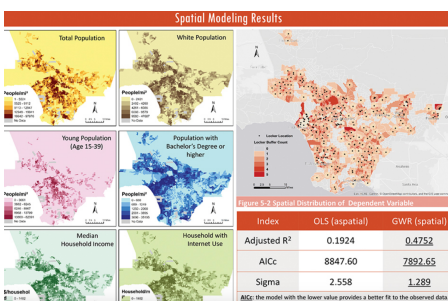
The articles in this newsletter are prepared or accomplished by others in their personal capacity. The opinions expressed are the author's own and do not necessarily reflect the views of METRANS or its partners.



#### METRANS And WTS-OC Partner For Girls' Engineering Day

Girls' Engineering Day is an annual, day-long event, hosted by WTS-OC, that introduces middle school and high school girls to possible futures within the transportation industry.

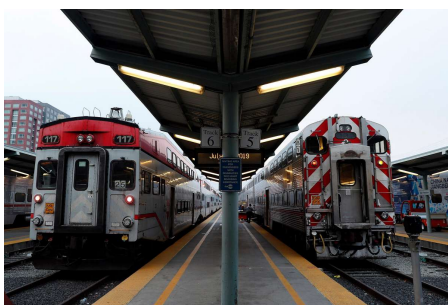
Read more [here](#).



#### USC Students' SSI Maps In 2020 Esri Map Book

The USC Spatial Sciences Institute (SSI) is pleased to share that this year's Esri® Map Book includes maps by two SSI students and one by an alumnus.

Read more about the maps and their creators [here](#).



#### Push To Save Caltrain Gets A Second Chance

A San Francisco supervisor is trying to save Caltrain after transit activists and business leaders pushed back against an attempt to kill a sales tax measure that would have kept the struggling commuter rail afloat.

Read more about Caltrain's woes and how to help [here](#).

### Webinars & Online Events

#### ITE Webinar: Smart Columbus: Smart Mobility Hubs Test Results and Go-Live Wednesday, July 22nd at 10:30 am PDT

Through the USDOT's Smart City Challenge, in 2016, the Department selected Columbus, Ohio, to define what it means to be a "smart city" and serve as a model for other cities wishing to fully integrate . . .

[More Info](#)

### Plaza Talk: Race and Place

Wednesday, July 22nd at 5 pm PDT

Understanding the meaning of the plaza gives us a starting place to unpack the contents of many central ideas and values in Latino urbanism. Latinos are transforming the US landscape. How then are . . .

[More Info](#)

---

### Cut/Fill: Open Space unConference for Landscape Architecture

Thursday, July 23rd at 8 am PDT

The purpose of this conference is to help us identify the changes we want to make to our own profession and to take the first steps to do so. COVID-19 knocked our society onto its heels; it made us pause . . .

[More Info](#)

---

### Resources Radio Live—Driving Behavior: How COVID-19 Pumped the Brakes on Transportation

Thursday, July 23rd at 10 am PDT

Dr. Brodeur will discuss his research on how the impacts of the coronavirus pandemic, social distancing, and limited travel have affected the number of vehicle collisions over the past several months. He will . . .

[More Info](#)

---

### Eno Webinar: State of the Industry: Freight Rail in 2020

Wednesday, July 23rd at 11 am PDT

The freight rail industry continues to operate throughout the pandemic, but it faces significant challenges due to fluctuating demand — particularly for key traffic drivers like automobiles and energy . . .

[More Info](#)

---

### WTS-LA: Virtual Passenger Rail Panel

Wednesday, July 29th at 12 pm PDT

Interested students, contact Dr. Vicki Deguzman [here](#) to request a sponsored student ticket while supplies last. Hear from LA Metro's Jeanet Owens and June Susilo, and from Metrolink's Todd McIntyre . . .

[More Info](#)

---

### TRB 2021 Annual Meeting Paper Submissions

Submit by Saturday, August 1st

In addition to the general call for transportation-related papers, TRB and TRR invite research papers addressing the subjects of Racial Inequity and Transportation and the COVID-19 Pandemic and . . .

[More Info](#)

## *Pathways to Opportunity*

### Housing Summer Internship

Atlanta Housing Authority

Remote

Apply ASAP

[See more info](#)

### Mechanical Engineering Intern

The Boring Company

Hawthorne, CA

Apply ASAP

[See more info](#)

[More Internships and Scholarships Here](#)

---

### Assistant Transportation Analyst

CMAP

Chicago, IL

### Civil Engineer

RailPros

Irvine, CA

Apply ASAP  
[See more info](#)

Apply ASAP  
[See more info](#)

[More Job Opportunities Here](#)

## Newsletter Staff

Danielle Dirksen • *Newsletter Lead* • [ddirksen@usc.edu](mailto:ddirksen@usc.edu)  
Zoey Li • *Newsletter Analyst, Social Media Lead, and Staff Writer* • [lizhaoya@usc.edu](mailto:lizhaoya@usc.edu)  
Marley Randazzo • *Design Lead and Staff Writer* • [marleyra@usc.edu](mailto:marleyra@usc.edu)  
Daniel Lamere • *Staff Writer* • [lamere@usc.edu](mailto:lamere@usc.edu)  
Dr. Victoria Deguzman • *Advisor* • [victoriv@price.usc.edu](mailto:victoriv@price.usc.edu)

## METRANS Associates

### Major Funders



### Associate Partners



### Academic Partners



Copyright © 2020 METRANS Transportation Center, All rights reserved.

New users and interested parties: [subscribe here](#).

Want to change how you receive these emails?  
You can [update your preferences](#) or [unsubscribe from this list](#).