



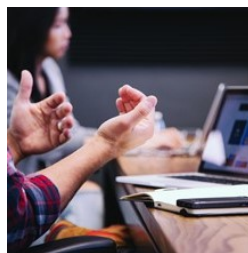
## METRANS on the Move: our weekly newsletter by students

RASC has extended the deadline for their 2021 Scholarship Applications to May 23rd, 2021! Click [here](#) to learn more and apply!



### In the News

The articles in this newsletter are prepared or accomplished by others in their personal capacity. The opinions expressed are the author's own and do not necessarily reflect the views of METRANS or its partners.



#### ASPD and METRANS Host 2021 State of Planning Roundtable

This virtual event convened a panel of practitioners from both the public and private sectors to share an insider's perspective on current planning careers and the skills and tools used in today's multidisciplinary planning environment.

Read more [here](#).



#### Congratulations to Lilly Nie, 2020 WTS-LA Myra Frank Memorial Scholarship Winner

Lilly Nie, the 2020 WTS-LA \$10,000 Myra Frank Memorial Scholarship winner, uses her unique position as a master's degree candidate to explore the intersection of transportation and community advocacy so that she can use what she learns to make the world a better place.

Read the WTS-LA feature [here](#).



#### POST POLLS: Public Transit Hopes to Win Back Riders After Crushing Year

As President Joe Biden urges more federal spending on public transportation, transit agencies decimated by COVID-19 are struggling to figure out how to win back passengers.

Read the U.S. News feature [here](#) and take our poll [here](#).

### Webinars & Online Events

#### UH NDPTC Special 3rd Thursday Event: Adaptation Urbanism and Resilient Community with Prof Billy Fields and Prof John Renne

Thursday, May 20th at 9:00 am PDT

Prof Billy Fields and Prof John Renne talk about their new book *Adaptation Urbanism and Resilient Communities: Transforming Streets to Address Climate Change* (Earthscan/Routledge) in a . . .

[More Info](#)

---

**NICR Webinar: Meet the California Minimum GTFS Guidelines**

Thursday, May 20th at 9:00 am PDT

The State of California has over 350 transit providers, covering a wide range of services and administrative capabilities.

[More Info](#)

---

**National Disaster Preparedness Training Center at the University of Hawaii Presents Mitigating Hazards with Land Use Planning**

Monday, May 24th - Tuesday, May 25th at 11:00 am PDT

This one-day (or 8-hour) performance-level training course aims to improve hazard mitigation through the implementation of land-use planning tools.

[More Info](#)

---

**C2SMART Center Proactive Safety Monitoring: A Functional Approach to Detecting Safety-related Anomalies Using Unmanned Aerial Vehicle Video Data**

Wednesday, May 26th at 10:00 am PDT

The advent of smart cities has motivated the field of transportation safety to transition towards a proactive approach. One of the stepping-stones to complete this transition is to monitor risk levels of the . . .

[More Info](#)

---

**STRIDE WEBINAR: Demonstration Study: Older Driver Experiences with Autonomous Vehicles**

Wednesday, May 26th at 9:00 am PDT

Older adults (≥65 years) account for 20% of the US population but are over-represented in multiple-vehicle crashes. Automated vehicles (AVs) may hold safety benefits for older adults, if they . . .

[More Info](#)

---

**Transportation Research Board (TRB) Standing Committee on Women and Gender in Transportation (AME20) Webinar Series: Young Scholars Transportation Research Webinar**

Thursday, May 27th at 9:00 am PDT

Join the TRB Women and Gender in Transportation Committee for a webinar series that highlights the intersection of women and gender-related topics with other transportation topics.

[More Info](#)

---

**The 12th Annual Mineta National Transportation Finance Summit Presents: Electrifying the Transportation Future**

Friday, June 11th at 10:00 am PDT

Transportation policymakers face two overlapping, once-in-a-generation opportunities: electrifying the nation's vehicle fleet and re-establishing a stable source of federal and state revenue for transportation.

[More Info](#)

---

**Fast Facts***Created for Students, by Students*



**Fast Facts**  
Cutting edge transportation research summaries  
Created for students, by students

## Stormwater Drainage Design and Best Management Practices with Applications to Roadways and Climate Change

**Authors:** Oceana Puananilei Francis, Linqiang Yang

**Year:** 2020

**Keywords:** sustainability, energy, health, transportation planning, policy, finance

### What's going on?

Urbanization has changed the natural systems and significantly impacted the water quality of ambient water bodies by developing impervious surfaces that cannot soak up water, thus generating stormwater runoff. There is a critical need to clarify mechanisms regarding stormwater-associated problems and evaluate the relationship between the implementation of Best Management Practices (BMPs) and stormwater control. Thus, more training is needed to select and implement BMPs. Further, additional information is needed concerning stormwater management and how the stormwater sector can better engage with state programs.



### What were the findings?

Based on the needs identified above, the project proposes a 5-hour in-person training course comprised of five modules that aim to prepare participants, specifically transportation agencies, to describe and analyze stormwater runoff problems and select and design appropriate stormwater BMPs, with application to roadways and climate change. The five modules include: 1) Welcome, Introduction, and Administration; 2) Terms and Definitions Used in Stormwater Management; 3) Stormwater Problems and Management; 4) Site Development Principles; and 5) Course Summary and Administration.

### What's next?

If used, this course is expected to improve the understanding of stormwater management at a national level and equip transportation agencies with stormwater management knowledge and skills.

Read the full report on our website:

[https://www.metrans.org/assets/research/psr-18-42\\_francis\\_final-report.pdf](https://www.metrans.org/assets/research/psr-18-42_francis_final-report.pdf)

The Pacific Southwest Region UTC conducts an integrated, multidisciplinary program of research, education and technology transfer aimed at improving the mobility of people and goods throughout the region.

Check this week's featured Fast Facts [here](#).  
Looking for more Fast Facts? Check out the Fast Facts Page on Metrans.org!

[Take me to Fast Facts](#)

## Pathways to Opportunity

### 18th TRB Transportation Planning Applications Conference Fellowship

TRB

Apply by 05/28/2021

[See more info](#)

### NASA Fellowship Activity 2021 Call for Proposals MSI Fellowships 2021

NASA

Apply by 05/24/2021

[See more info](#)

[More Internships and Scholarships Here](#)

### Lead Travel Analyst

WSDOT

Tumwater, WA

Apply by 06/06/21

[See more info](#)

### Senior Planner

City of Mesa

Mesa, AZ

Apply by 05/27/2021

[See more info](#)

[More Job Opportunities Here](#)

## Newsletter Staff

Isidoro Serna • *Newsletter Lead* • [iserna@usc.edu](mailto:iserna@usc.edu)  
Marley Randazzo • *Managing Director* • [marleyra@usc.edu](mailto:marleyra@usc.edu)  
Adina Beck • *Publishing* • [akbeck@usc.edu](mailto:akbeck@usc.edu)  
Kevin Argueta Flores • *Publishing* • [arguetaf@usc.edu](mailto:arguetaf@usc.edu)  
Ashley Jimenez • *Staff Writer* • [ashleyvj@usc.edu](mailto:ashleyvj@usc.edu)

Daniel Lamere • Staff Writer • [lamere@usc.edu](mailto:lamere@usc.edu)  
 Hayley Rundle • Staff Writer • [hrundle@usc.edu](mailto:hrundle@usc.edu)  
 Nikitha Kolapalli • Staff Editor and Writer • [kolapalli@usc.edu](mailto:kolapalli@usc.edu)  
 Nandhana Nixon • Social Media and Outreach • [nandhana@usc.edu](mailto:nandhana@usc.edu)  
 Namitha Nixon • Social Media and Outreach • [namithan@usc.edu](mailto:namithan@usc.edu)  
 Dr. Victoria Deguzman • Advisor • [victoriv@price.usc.edu](mailto:victoriv@price.usc.edu)

## METRANS Associates

### Major Funders



### Associate Partners



### Academic Partners



Copyright © 2021 METRANS Transportation Consortium, All rights reserved.

New users and interested parties: [subscribe here](#).

Want to change how you receive these emails?  
 You can [update your preferences](#) or [unsubscribe from this list](#).